

CCS 350 → LOCKING PROCEDURE

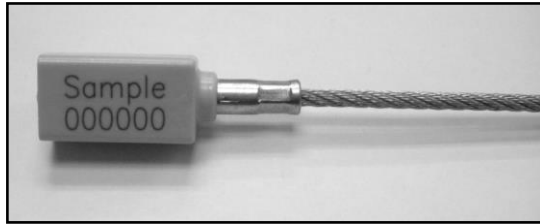


Diagram A

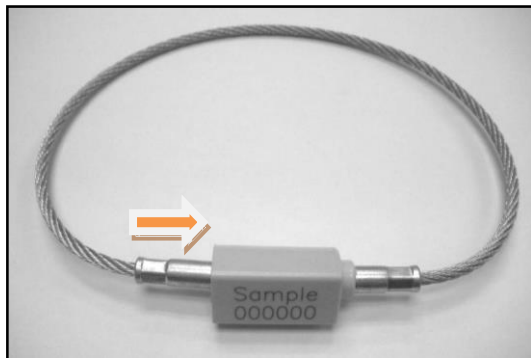


Diagram B

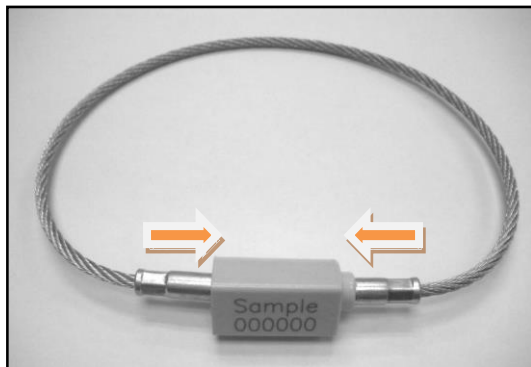


Diagram C

STEP 1

Make sure the seal is being placed with the front side facing the user, as shown in Diagram A.

STEP 2

Hold the seal using one hand and with the other, insert the locking head into the entry hole (follow the arrow), as shown in Diagram B.

STEP 3

After inserting, push the locking head in till the maximum until you hear a “click” sound to indicate sealing, as shown in Diagram C.