

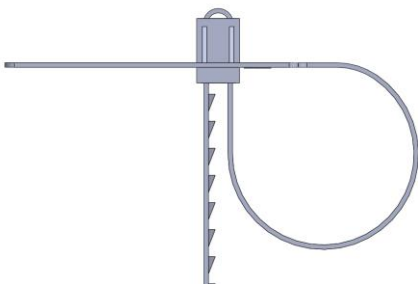
# **FORT DUOLOCK** **LOCKING PROCEDURE**



**Diagram A**



**Diagram B**



**Diagram C**

## **STEP 1**

Make sure the seal flap being placed with the rear side facing the user, as shown in Diagram A.

## **STEP 2**

Hold the seal flap using one hand and with the other, insert the strip at the entry hole, as shown in Diagram B. Pull the strip tight till the maximum.

## **STEP 3**

Insert the strip to other side as shown in Diagram C. After inserting, pull the strip tight till the maximum and ensure there is no gap left after sealing.