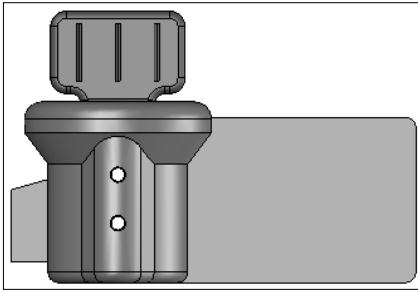
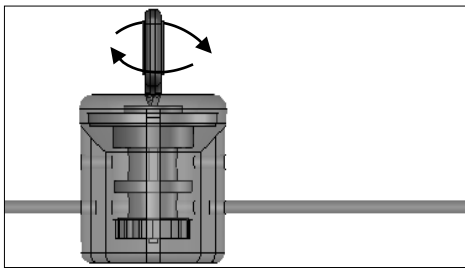


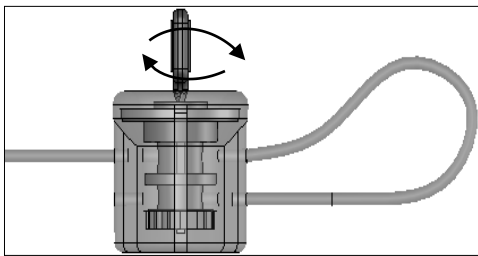
# MEGA TWISTER / MEGA TWISTER SP → LOCKING PROCEDURE



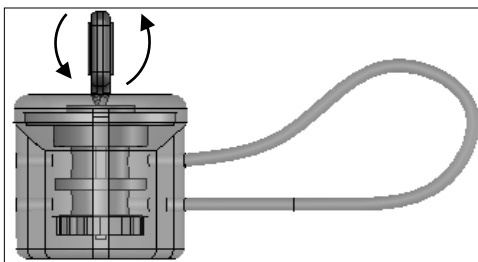
**Diagram A**



**Diagram B**



**Diagram C**



**Diagram D**

## **STEP 1**

Ensure both insertion and locking holes aligned correctly for wire insertion, as shown in Diagram A.

## **STEP 2**

Insert the wire at the bottom entry hole followed by twisting the head in clockwise direction, as shown in Diagram B, until the wire end wraps in completely.

## **STEP 3**

Then in order to lock, insert the other end of the wire in the upper entry hole and repeat the same step as above, as shown in Diagram C.

## **STEP 4**

Once completely locked, break the twister tab by pushing it backwards, as shown in diagram D.