

INDICATIVE SEAL AIRLINE PADLOCK (APAD) Application Seal

Rounded locking mechanism and bold structure for ease of operation.

Airline Padlock features a rounded locking mechanism that is user-friendly to seal all kinds of locking latches. The seal is designed with a larger flap and thicker locking head, hence suitable for roughly handled applications. Besides, the seal is space-saving due to its slim and flat-lay structure with a variety of colours available for colour coding and ease of operation. These seals include the BioSphere bio-additive.

To provide eco-conscious solutions on a wide array of applications, all Mega Fortris' security seal product lines with plastic content will include the BioSphere bio-additive from 13th May 2024.

Applications:

- Authentication Tagging
- Aircraft Carts
- Retail Applications
- F&B Applications



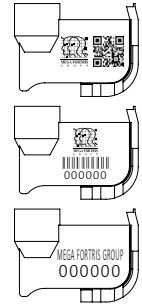
Our biodegradable plastic additives go deeper, allowing microbes to consume the C-C bonds within plastic's structure at a macromolecular level. This increases the surface area of plastic products and enables plastophilic microbes to attach to the polymer's newfound cavities. So, unlike regular plastic that can sit in a landfill for hundreds or thousands of years, plastic enhanced with BioSphere attracts over 600 different types of microbes that effectively digest and consume it.

PREVENTION · PROTECTION · PEACE OF MIND





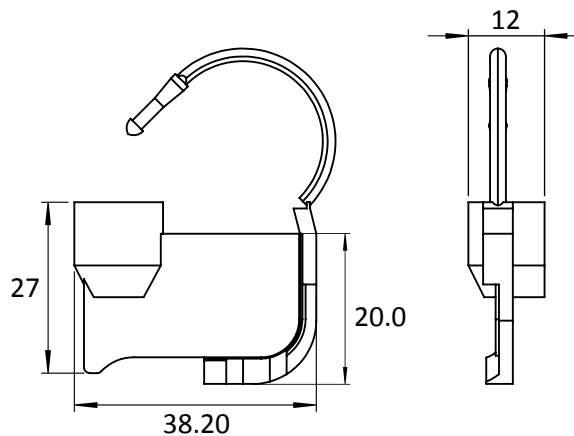
LASER MARKING OPTION



VIEW APPLICATION GIF



- 1 The Airline Padlock is moulded with Polypropylene (PP) plastic material to ensure light and durable quality for different applications and clear evidence of tampering.
- 2 One-way snap-on locking mechanism is embedded for fast and easy application while an inspection window at the back for clear vision of locking.
- 3 Irreversible identifiers such as name, logo, barcode, serial number and QR code are laser-marked on the body.
- 4 These seals include the BioSphere bio-additive.



TECHNICAL SPECIFICATIONS

PRODUCT - AIRLINE PADLOCK (APAD)					
Code	Material	Locking Length/Size	Tensile Strength	Marking Area	Max Marking Digits
APAD	Plastic (Body & Cap) : Polypropylene (PP) Temperature Range: -5°C to 80°C Plastic (Insert) : Acetal (POM) Temperature range: -40°C to 120°C	28.5 x 12 mm	≥8 kgf (≥17.6 lbf)	34 x 20 mm (1.3 x 0.8 in)	Serial no : 6 Barcode : 5

PACKAGING					
Carton	Quantity	Dimensions (mm)	Gross Weight (kg)	Volume (m³)	Standard Pastel Colours
Inner	1000	284 x 254 x 299 (11.2 x 10.0 x 11.8 in)	3.3 (7.3 lb)	0.022 (0.8 cu.ft.)	Body : WH PSYL PSOR PSRD PSBL PSGN BK Cap : WH FR

For colour customisations, kindly contact us for further information.

Updated Date : 10 May 2024