

INDICATIVE SEAL

DRAGON SEAL (DS)

Pull-Tight Seal

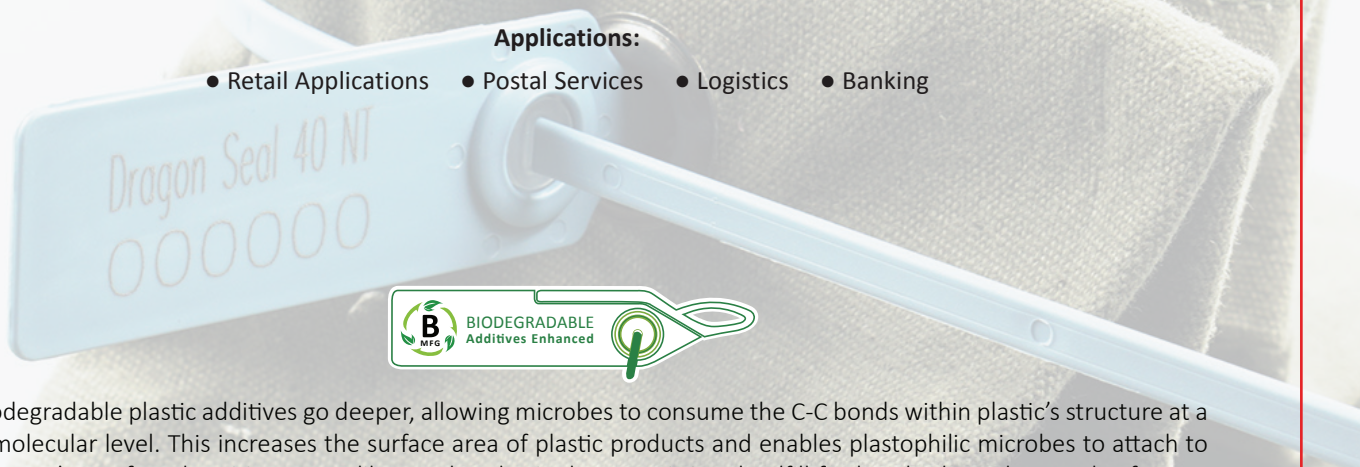
Stronger seal structure for security in heavy duty.

Dragon Seal features a series of strong indicative seals with a wide flap. It is rigid to withstand rough handling and has high pull strength endurance. It is available in two versions: the classic non tear-off version and the tear-off version for easy, tool-free removal. This range of seals is durable and versatile for security and authentication purposes in any application. These seals include the BioSphere bio-additive.

To provide eco-conscious solutions on a wide array of applications, all Mega Fortris' security seal product lines with plastic content will include the BioSphere bio-additive from 13th May 2024.

Applications:

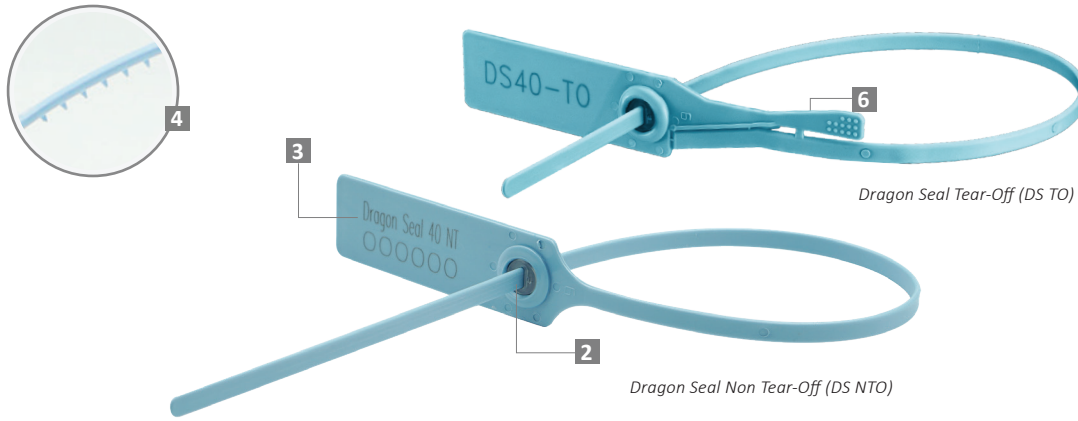
- Retail Applications
- Postal Services
- Logistics
- Banking



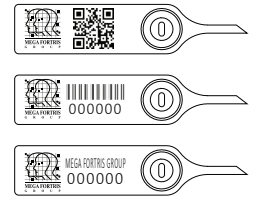
Our biodegradable plastic additives go deeper, allowing microbes to consume the C-C bonds within plastic's structure at a macromolecular level. This increases the surface area of plastic products and enables plastophilic microbes to attach to the polymer's newfound cavities. So, unlike regular plastic that can sit in a landfill for hundreds or thousands of years, plastic enhanced with BioSphere attracts over 600 different types of microbes that effectively digest and consume it.

PREVENTION · PROTECTION · PEACE OF MIND





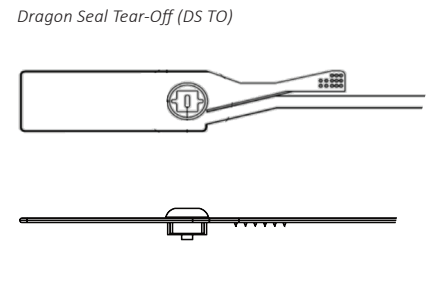
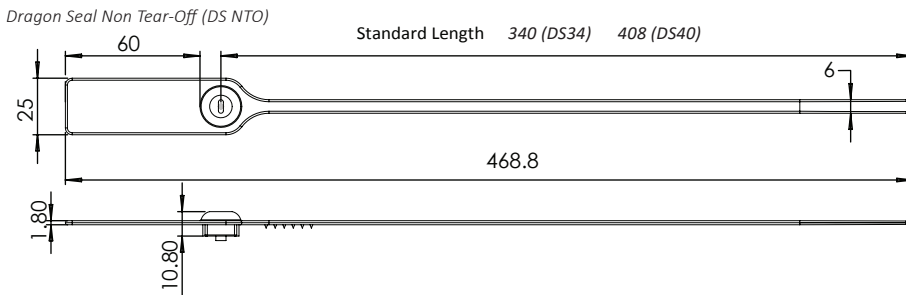
LASER MARKING OPTION



VIEW APPLICATION VIDEO



- 1 The Dragon Seal is moulded with Polypropylene (PP) material with the metal lock heat staking encapsulated to complement the long, thick strap.
- 2 One-way locking mechanism is embedded for fast and easy application.
- 3 The large flap allows ample space for identifier marking. Irreversible identifiers such as name, logo, barcode, serial number and QR code are laser-marked on the flap.
- 4 Spikes are placed behind the seal to provide better grip on the application surface.
- 5 Different strap lengths are available to cater to different applications.
- 6 Tear-off (TO) variation is available for easy removal.
- 7 These seals include the BioSphere bio-additive.



TECHNICAL SPECIFICATIONS

PRODUCT - DRAGON SEAL (DS)

Code	Material	Locking Length (mm)	Locking Size (mm)	Tensile Strength (kgf)	Marking Area (mm)	Max Marking Digits
DS34	Plastic : Polypropylene (PP) Temperature Range: -5°C to 80°C	340 (13.39 in)	6.0 (0.24 in)	≥35 (≥77.16 lbf)	21 x 56 (0.83 x 2.20 in)	Serial no : 14 Barcode : 13
DS40	Metal Jaw : Stainless Steel (SUS 304)	400 (15.75 in)				

PACKAGING

Carton	Quantity	Dimensions (mm)	Gross Weight (kg)	Volume (m³)	Standard Pastel Colours
DS34 Inner	1000	562 x 316 x 244 (22.1 x 12.4 x 9.6 in)	7.69 (16.95 lb)	0.043 (1.5 cu.ft.)	Flap : WH PSYL PSOR PSRD PSBL PSGN BK Cap : WH FR
DS40 Inner			8.79 (19.38 lb)		

For colour customisations, kindly contact us for further information.

Updated Date : 29 July 2025