

## INDICATIVE SEAL FLEET LOCK (FL) Fixed Length Seal

### ***Slim and ring-shaped structure for prudent security application.***

Fleet Lock features a thin flat structure to accommodate a variety of applications without compromising its securing ability. The seal is user-friendly and has a large marking area on the flap for detailed identifiers and easy reading. The one-piece plastic moulded seal has a wide range of user-friendly applications. A stronger seal structure for security in heavy duty. These seals include the BioSphere bio-additive.

To provide eco-conscious solutions on a wide array of applications, all Mega Fortris' security seal product lines with plastic content will include the BioSphere bio-additive from 13th May 2024.

#### **Applications:**

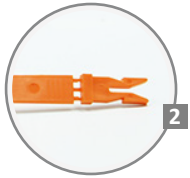
- Retail Applications
- Chemical and Oil Refinery
- Warehousing and Logistics
- F&B Applications



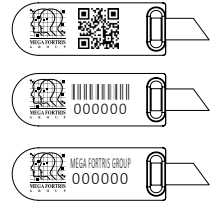
Our biodegradable plastic additives go deeper, allowing microbes to consume the C-C bonds within plastic's structure at a macromolecular level. This increases the surface area of plastic products and enables plastophilic microbes to attach to the polymer's newfound cavities. So, unlike regular plastic that can sit in a landfill for hundreds or thousands of years, plastic enhanced with BioSphere attracts over 600 different types of microbes that effectively digest and consume it.

**PREVENTION · PROTECTION · PEACE OF MIND**

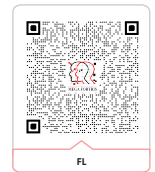




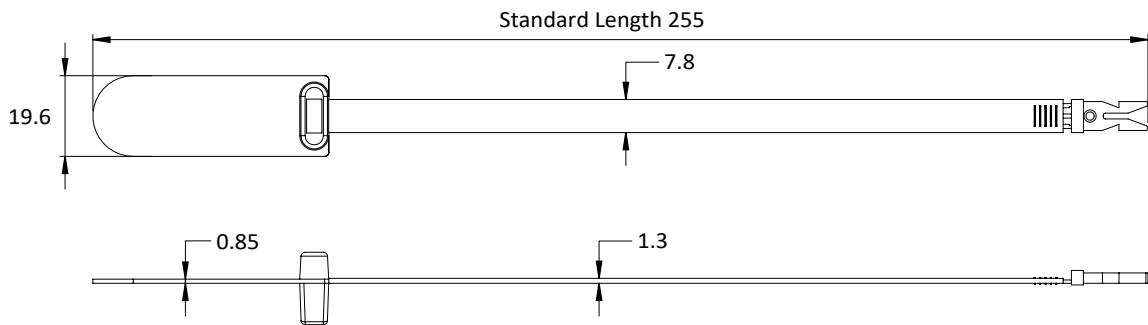
LASER MARKING OPTION



VIEW APPLICATION VIDEO



- 1 The Fleet Lock is moulded with Polypropylene (PP) material with security breaking lines at the snapping point for better security during locking. The lines double as clear evidence of tampering should the seal be glued or welded together.
- 2 The one-way double locking mechanism of this seal is presented at the locking end as it clasps through the locking chamber, hence ensuring proper sealing and prevents tampering via the back of the seal.
- 3 The large flap allows ample space for irreversible identifiers such as name, logo, barcode, serial number and QR code to be laser-marked on it.
- 4 These seals include the BioSphere bio-additive.



TECHNICAL SPECIFICATIONS

PRODUCT - FLEET LOCK (FL)

Code	Material	Locking Length	Locking Size	Tensile Strength	Marking Area	Max Marking Digits
FL	<b>Plastic :</b> Polypropylene (PP) Temperature Range: -5°C to 80°C	198 mm (7.8 in)	7.8 mm (0.3 in)	≥10 kgf (≥22.0 lbf)	16 x 53 mm (0.6 x 2.1 in)	<b>Serial no : 10</b> <b>Barcode : 11</b>

PACKAGING

Carton	Quantity	Dimensions (mm)	Gross Weight (kg)	Volume (m <sup>3</sup> )	Standard Pastel Colours
Inner	1000	454 x 234 x 284 (17.9 x 9.2 x 11.2 in)	4.35 (9.6 lb)	0.03 (1.1 cu.ft.)	Body : WH, PSYL, PSOR, PSRD, PSBL, PSGN, BK

For colour customisations, kindly contact us for further information.

Updated Date : 29 July 2025