

## INDICATIVE SEAL

# FORT DOUBLE LOCK (FDL)

### Fixed Length Seal

#### ***Rounded and tamper-evident locking for easy sealing and versatility.***

Fort Double Lock features a flat round locking head for quick and easy application without compromising its securing features. The seal has a large marking area on the flap for detailed identifiers and easy reading. The smooth surface and ribbed section help with gripping and enhance operational efficiency.

These seals include the BioSphere bio-additive.

To provide eco-conscious solutions on a wide array of applications, all Mega Fortris' security seal product lines with plastic content will include the BioSphere bio-additive from 13th May 2024.

#### **Applications:**

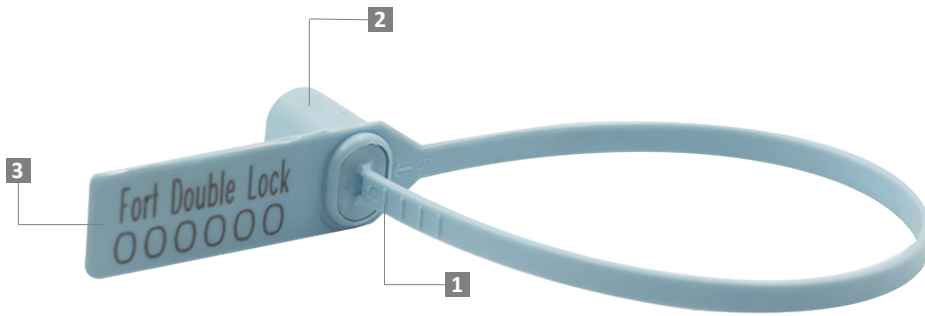
- Retail Applications
- Chemical and Oil Refinery
- Warehousing and Logistics
- F&B Applications



Our biodegradable plastic additives go deeper, allowing microbes to consume the C-C bonds within plastic's structure at a macromolecular level. This increases the surface area of plastic products and enables plastophilic microbes to attach to the polymer's newfound cavities. So, unlike regular plastic that can sit in a landfill for hundreds or thousands of years, plastic enhanced with BioSphere attracts over 600 different types of microbes that effectively digest and consume it.

PREVENTION · PROTECTION · PEACE OF MIND





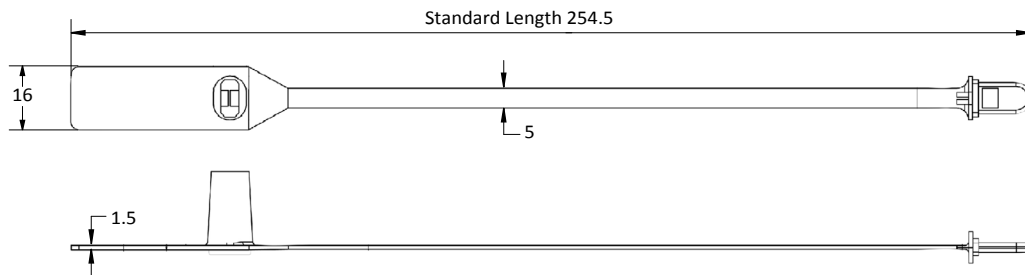
LASER MARKING OPTION



VIEW APPLICATION GIF



- 1 The Fort Double Lock is moulded with high-impact PP material with a grip at the end for quick detection of breaking point and easy removal with clear evidence of tampering.
- 2 One-way double locking mechanisms are embedded for easy application and prevent tampering.
- 3 The large flap allows ample space for irreversible identifiers such as name, logo, barcode, serial number and QR code to be laser-marked on it.
- 4 These seals include the BioSphere bio-additive.



TECHNICAL SPECIFICATIONS

PRODUCT - FORT DOUBLE LOCK (FDL)						
Code	Material	Locking Length	Locking Size	Tensile Strength	Marking Area	Max Marking Digits
FDL	<b>Plastic :</b> Polypropylene (PP) Temperature Range: -5°C to 80°C	193 mm (7.6 in)	5 mm (0.2 in)	>16 kgf (>35.3 lbf)	12 x 32 mm (0.5 x 1.3 in)	<b>Serial no : 8</b> <b>Barcode : 8</b>

PACKAGING					
Carton	Quantity	Dimensions (mm)	Gross Weight (kg)	Volume (m <sup>3</sup> )	Standard Pastel Colours
Inner	1000	454 x 234 x 284 (17.9 x 9.2 x 11.2 in)	4.9 (10.8 lb)	0.030 (1.06 cu.ft.)	Body : WH PSYL PSOR PSRD PSBL PSGN BK Cap : WH FR

For colour customisations, kindly contact us for further information.

Updated Date : 06 May 2024