



MEGA FORTRIS
G R O U P

INDICATIVE SEAL
KOSAN SEAL
Application Seal

Rigid structure and precise locking for operation efficiency.

Kosan Seal is an indicative seal precisely structured to fit its application of sealing gas valve caps. The seal is durable to withstand harsh conditions and has a tear-off line for easy user removal.

These seals include the BioSphere bio-additive.

To provide eco-conscious solutions on a wide array of applications, all Mega Fortris' security seal product lines with plastic content will include the BioSphere bio-additive from 13th May 2024.

Applications:

- Oil & Gas



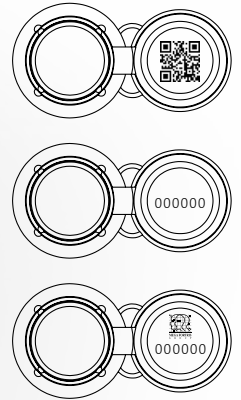
Our biodegradable plastic additives go deeper, allowing microbes to consume the C-C bonds within plastic's structure at a macromolecular level. This increases the surface area of plastic products and enables plastophilic microbes to attach to the polymer's newfound cavities. So, unlike regular plastic that can sit in a landfill for hundreds or thousands of years, plastic enhanced with BioSphere attracts over 600 different types of microbes that effectively digest and consume it.

PREVENTION · PROTECTION · PEACE OF MIND

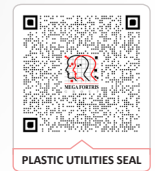




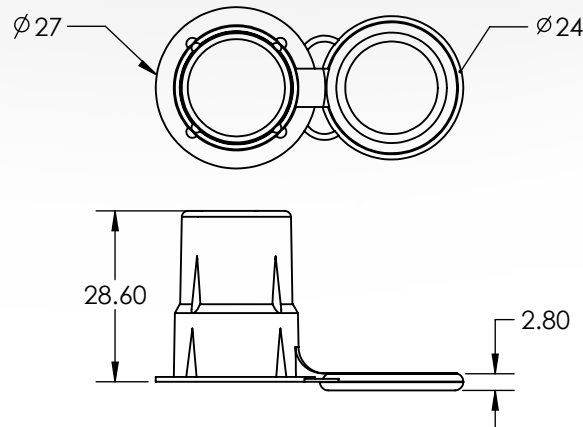
LASER MARKING OPTION



VIEW APPLICATION GIF



- 1 The Kosan Seal is moulded with Low-Density Polyethylene (LDPE), making it a durable seal that can withstand harsh conditions.
- 2 Irreversible identifiers such as name, serial number and QR code are laser-marked on the side.
- 3 Default tear-off features allow for quick removal.
- 4 These seals include the BioSphere bio-additive.



TECHNICAL SPECIFICATIONS

PRODUCT - KOSAN SEAL

Code	Material	Locking Length	Locking Size	Tensile Strength	Marking Area	Max Marking Digits
KOSAN	Plastic : Low Density Propylene (LDPE)	N/A	N/A	N/A	Ø 24 mm (0.58 x 1.7 in)	Serial no : 6 QR Code

PACKAGING

Carton	Quantity	Dimensions (mm)	Gross Weight (kg)	Volume (m³)	Standard Colours
Inner	1000	454 x 234 x 284 mm (17.9 x 9.2 x 11.2 in)	3.34 (29.4 lb)	0.03017 (1.065 cu.ft)	Body : WH PSYL PSOR PSRD PSBL PSGN BK

For colour customisations, kindly contact us for further information.

Updated Date : 13 May 2024