

## INDICATIVE SEAL

# MEGA TRUCK SEAL WITH (MTK WF) & WITHOUT FLAP (MTK)

## Fixed Length Seal

### ***Rigid locking mechanism and seal structure for durability and security.***

Mega Truck Seal has a uniquely designed locking mechanism and structure to provide high tensile strength while withstanding rough handling. The seal is user-friendly with an optional flap of a large marking area for identifiers.

The smooth surface and ribbed section help with gripping and enhance operational efficiency.

These seals include the BioSphere bio-additive.

To provide eco-conscious solutions on a wide array of applications, all Mega Fortris' security seal product lines with plastic content will include the BioSphere bio-additive from 13th May 2024.

### Applications:

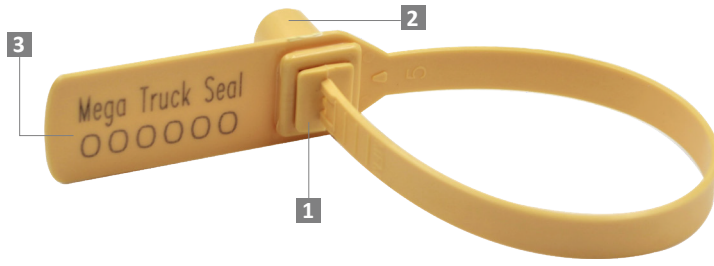
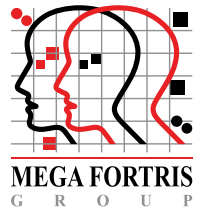
- Retail Applications
- Chemical and Oil Refinery
- Warehousing and Logistics
- F&B Applications



Our biodegradable plastic additives go deeper, allowing microbes to consume the C-C bonds within plastic's structure at a macromolecular level. This increases the surface area of plastic products and enables plastophilic microbes to attach to the polymer's newfound cavities. So, unlike regular plastic that can sit in a landfill for hundreds or thousands of years, plastic enhanced with BioSphere attracts over 600 different types of microbes that effectively digest and consume it.

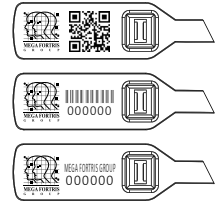
PREVENTION · PROTECTION · PEACE OF MIND



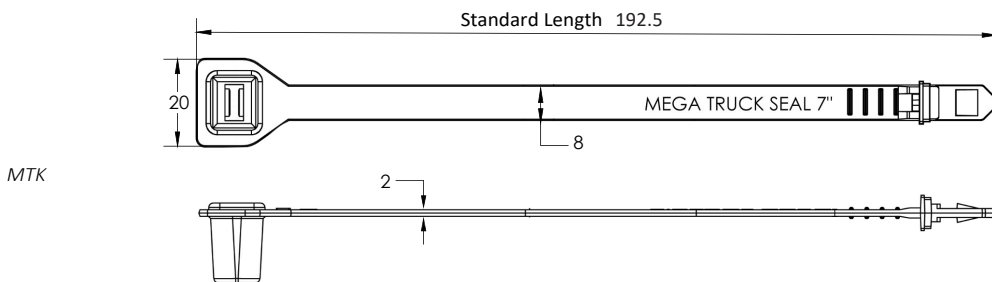
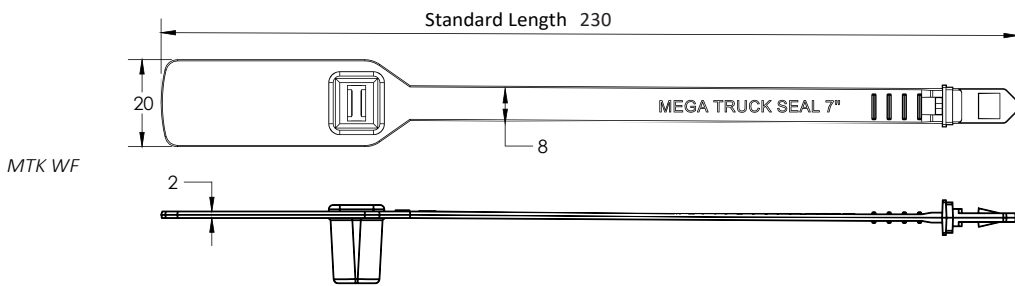


- 1 The Mega Truck Seal is moulded with Polypropylene (PP) material with a ribbed section at the end for quick detection of the breaking point and easy removal while clearly showing evidence of tampering.
- 2 One-way double locking mechanisms are embedded for easy application and prevent tampering.
- 3 The large flap allows ample space for irreversible identifiers such as name, logo, barcode, serial number and QR code to be laser-marked on the flap, and optionally on the strap.
- 4 These seals include the BioSphere bio-additive.

LASER MARKING OPTION



VIEW APPLICATION VIDEO



TECHNICAL SPECIFICATIONS

PRODUCT - MEGA TRUCK SEAL WITH FLAP (MTK WF) & MEGA TRUCK SEAL (MTK)

Code	Material	Locking Length	Locking Size	Tensile Strength	Marking Area	Max Marking Digits
MTK WF	<b>Plastic :</b> Polypropylene (PP) Temperature Range: -5°C to 80°C	166 mm (6.5 in)	8 mm (0.3 in)	>55 kgf (>121.3 lbf)	15 x 30 mm (0.8 x 1.2 in) & 10 x 4 mm (0.4 x 0.16 in)	<b>Serial no : 8</b> <b>Barcode : 8</b>
MTK					10 x 4 mm (0.4 x 0.16 in)	

PACKAGING

Carton	Quantity	Dimensions (mm)	Gross Weight (kg)	Volume (m <sup>3</sup> )	Standard Pastel Colours
MTK WF Inner	1000	465 x 285 x 310 (18.3 x 11.2 x 12.2 in)	5.2 (11.5 lb)	0.041 (1.4 cu.ft.)	Body : WH PSYL PSOR PSRD PSBL PSGN BK Cap : WH FR For colour customisations, kindly contact us for further information.
MTK Inner		362 x 290 x 225 (14.3 x 11.4 x 8.9 in)	4.15 (9.15 lb)	0.024 (0.8 cu.ft.)	

Updated Date : 29 July 2025