

MD DISPLAY



MEGA FORTRIS
G R O U P

INDICATIVE SEAL

MEGA TWISTER (MTW)

MEGA TWISTER TACHOGRAPH (MTW-T)

Application Seal

Fundamental and feasible piece for quick utility security.

The Mega Twister & Mega Twister Tachograph is an elementary utility seal designed with essential tamper-evident features. The seal has a translucent body for quick inspection of the twister insert sealing. Colour coded inserts and ample identifier marking area eases operations. The seal is small in size and versatile for any securing and identifying purposes. These seals include the BioSphere bio-additive. To provide eco-conscious solutions on a wide array of applications, all Mega Fortris' security seal product lines with plastic content will include the BioSphere bio-additive from 13th May 2024.

Applications:

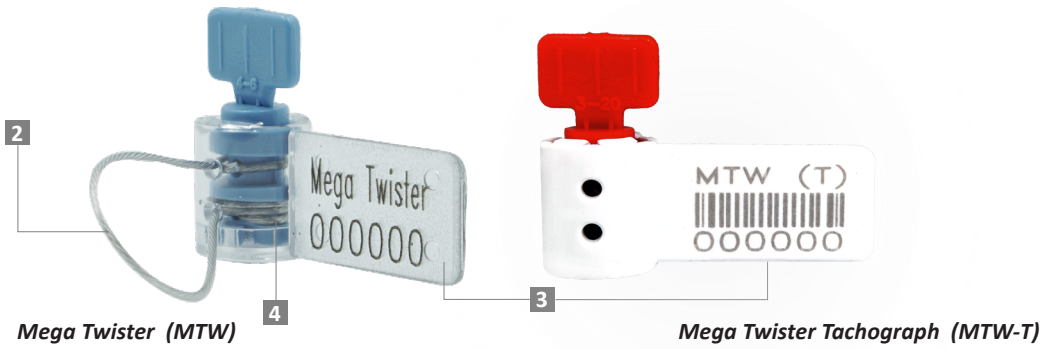
- Utility Meters & Scales
- Chemical and Oil Refinery
- Transportation
- Banking
- Tachographs



Our biodegradable plastic additives go deeper, allowing microbes to consume the C-C bonds within plastic's structure at a macromolecular level. This increases the surface area of plastic products and enables plastophilic microbes to attach to the polymer's newfound cavities. So, unlike regular plastic that can sit in a landfill for hundreds or thousands of years, plastic enhanced with BioSphere attracts over 600 different types of microbes that effectively digest and consume it.

PREVENTION · PROTECTION · PEACE OF MIND





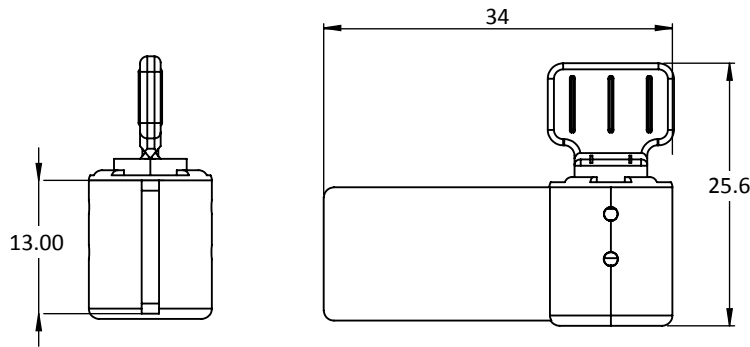
LASER MARKING OPTION



VIEW APPLICATION GIF



- 1 The Mega Twister is moulded with a twister locking insert in a plastic translucent body for a clear view of the locking and evidence of tampering.
- 2 Stainless steel wire is required for the twister locking to achieve quick and tight securing of the seals.
- 3 A marking area flap is placed on the side for irreversible laser marking of identifiers such as name, logo, serial number and QR code.
- 4 Colour coding is possible with a combination of translucent plastic body and vibrant colour insert, which is available in a wide range of choices.
- 5 These seals include the BioSphere bio-additive.
- 6 Mega Twister Tachograph, EN16882 certified for use in tachograph environments.



TECHNICAL SPECIFICATIONS

PRODUCT - MEGA TWISTER (MTW) & MEGA TWISTER TACHOGRAPH (MTW-T)							
Code	Material		Locking Length	Locking Size	Tensile Strength	Marking Area	Max Marking Digits
MTW	Plastic body: Polycarbonate (PC) Temperature range: -40°C to 85°C	Plastic insert: Acetal Temperature range: -40°C to 120°C	250 mm (9.8 in)	∅2.5 mm (0.03 in)	>30 kgf (>66 lbf)	13 mm x 22 mm (0.5 in x 0.9 in)	Serial no : 6 Barcode : 6
MTW-T	Plastic body: Acetal Temperature range: -40°C to 120°C	Cable: Plastic-coated Stainless Steel 304 (SUS 304)					

PACKAGING

Carton	Quantity	Dimensions (mm)	Gross Weight (kg)	Volume (m ³)	Standard Colours				
Inner MTW	500 with twisted wire	255 x 205 x 145 mm (10 x 8.1 x 5.7 in)	2.5 (5.5 lb)	0.008 (0.283 cu. ft.)	MTW Body :	FR	MTW-T Body :	WH	BK
Inner MTW-T	1000 without twisted wire				Insert :	FR	YL	OR	GN

Updated Date : 13 May 2024