

SECURE

System : 3 phase 4 wire
Voltage : 3 x 230/400V
Current : 3 x 10 - 100A
Frequency : 50Hz
Test LED
800 Pulses/Unit

kWh Cl. 1.0
kVArh Cl. 2.0



MEGA FORTRIS
G R O U P

INDICATIVE SEAL

MEGA TWISTER SP (MTW SP)

Application Seal

Extensive range of designs for a variety of identifying purposes.

The Mega Twister SP seal range consists of multiple identifier placement options to accommodate different requirements. Their simple locking mechanism makes the seals user-friendly and versatile for different applications.

The seals are small in size and space-saving. These seals include the BioSphere bio-additive.

To provide eco-conscious solutions on a wide array of applications, all Mega Fortris' security seal product lines with plastic content will include the BioSphere bio-additive from 13th May 2024.

Applications:

- Utility Meters & Scales
- Chemical and Oil Refinery
- Transportation
- Banking



Our biodegradable plastic additives go deeper, allowing microbes to consume the C-C bonds within plastic's structure at a macromolecular level. This increases the surface area of plastic products and enables plastophilic microbes to attach to the polymer's newfound cavities. So, unlike regular plastic that can sit in a landfill for hundreds or thousands of years, plastic enhanced with BioSphere attracts over 600 different types of microbes that effectively digest and consume it.

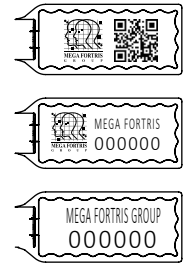
PREVENTION · PROTECTION · PEACE OF MIND



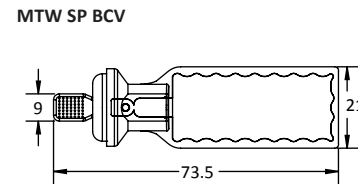
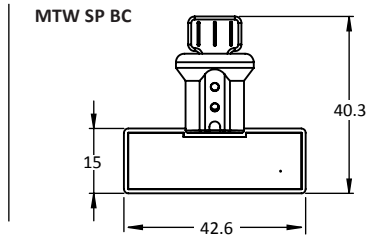
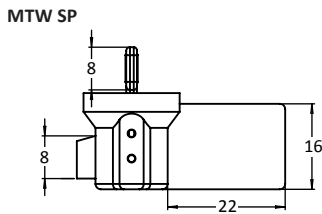


- 1 The Mega Twister SP seals are moulded with a twister locking insert and white cap ultrasonically and heat staking welded in a plastic translucent body for a better view of the locking and evidence of tampering.
- 2 Stainless steel wire is required for the twister locking to achieve quick and tight securing of the seals.
- 3 The laser marking area of each design is placed differently with the options of horizontal area on the side (MTW SP), at the bottom (MTW SP BC), and vertical area at the bottom (MTW SP BCV).
- 4 The laser marking area is sufficient for irreversible essential identifiers such as name, logo, serial number and QR code.
- 5 Colour coding is possible with a combination of translucent plastic body and vibrant colour insert, which is available in a wide range of choices.
- 6 Special UV additives for the product's long-lasting performance are available.
- 7 These seals include the BioSphere bio-additive.

LASER MARKING OPTION



VIEW APPLICATION GIF



TECHNICAL SPECIFICATIONS

PRODUCT - MEGA TWISTER SP (MTW SP)						
Code	Material	Locking Length	Locking Size	Tensile Strength	Marking Area	Max Marking Digits
MTW SP	Plastic body: Polycarbonate (PC) Temperature Range: -40°C to 85°C	250 mm (9.8 in)	∅ 0.8 mm (0.03 in)	>30 kgf (>66 lbf)	8 x 12 mm (0.31 x 0.5 in)	Serial no : 6
MTW SP BC	Plastic insert: Acetal Temperature Range: -40°C to 120°C				36 x 9.0 mm (1.4 x 0.4 in)	Serial no : 13 Barcode : 13
MTW SP BCV	Cable: Plastic-coated Stainless Steel 304 (SUS 304)				12 x 34 mm (0.5 x 1.3 in)	

PACKAGING

Carton	Quantity	Dimensions (mm)	Gross Weight (kg)	Volume (m³)	Standard Colours
MTW SP Inner	1000	338 x 255 x 190 mm (13.3 x 10 x 7.5 in)	4.68 (10.3 lb)	0.016 (0.565 cu. ft.)	Body : <input type="checkbox"/> FR
MTW SP BC Inner	500	284 x 254 x 299 mm (11.2 x 10 x 11.8 in)	5.14 (11.3 lb)	0.022 (0.777 cu. ft.)	Cap : <input type="checkbox"/> WH
MTW SP BCV Inner	<45cm	568 x 235 x 180 mm (22.4 x 9.3 x 7.1 in)	6.54 (14.4 lb)	0.024 (0.848 cu. ft.)	Insert : <input type="checkbox"/> WH <input type="checkbox"/> YL <input type="checkbox"/> OR <input type="checkbox"/> GN <input type="checkbox"/> RD <input type="checkbox"/> BL <input type="checkbox"/> BK

For colour customisations, kindly contact us for further information.

Updated Date : 13 May 2024