



**MEGA FORTRIS**  
G R O U P

## SECURITY SEAL

# MINI CABLE BREAKAWAY 150 (MCB 150)

Pull-Tight Barrier Seal

*Economical and feasible seal for security.*

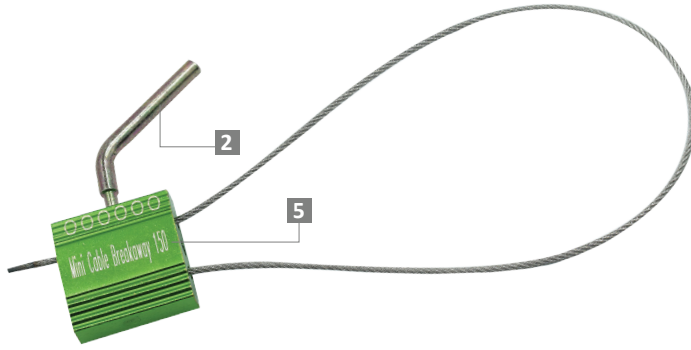
The Mini Cable Breakaway 150 has a special shear bolt locking mechanism that its shaft will break when it is tightened to secure the asset. It is highly affordable yet not compromising security. The design is simple and light for any security application.

### Applications:

- Authentication Tagging
- Aircraft Carts
- Retail Applications
- F&B Applications

PREVENTION · PROTECTION · PEACE OF MIND



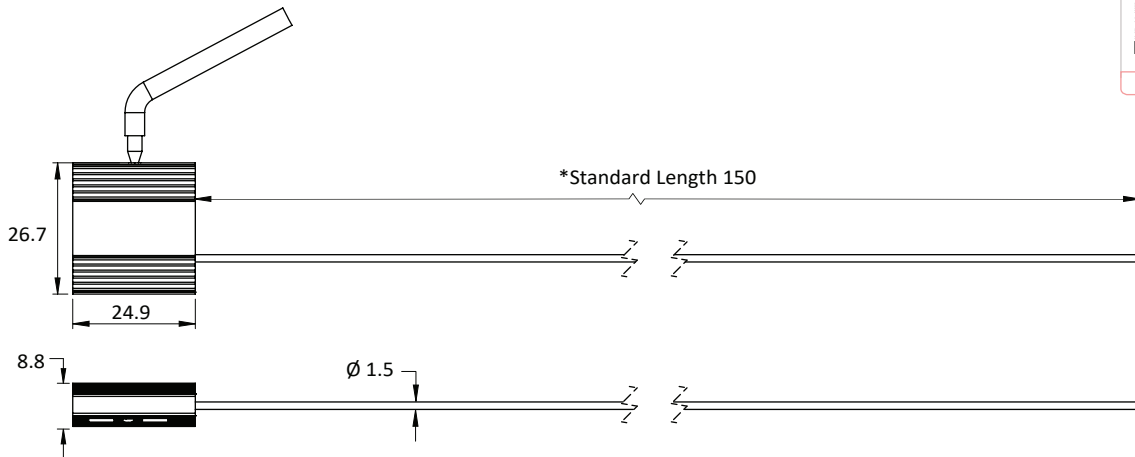


- 1 The Mini Cable Breakaway 150 is designed to guarantee cost-effectiveness and security.
- 2 The external locking mechanism of this seal consists of a shear bolt that breaks away when the cable is tightly secured in the body.
- 3 The non-preformed galvanised steel wire unravels upon cutting, hence showing clear tamper evidence.
- 4 The rib exterior is designed to protect laser marking during rough handling with anodisation of solid colour for colour coding.
- 5 Irreversible identifiers such as name, logo, barcode, serial number and QR code are laser-marked on the aluminium body.

LASER MARKING OPTION



VIEW APPLICATION VIDEO



TECHNICAL SPECIFICATIONS

\*Customisable cable length upon request.

PRODUCT - MINI CABLE BREAKAWAY 150 (MCB 150)

Code	Material	Locking Length	Locking Size	Tensile Strength	Marking Area	Max Marking Digits
MCB 150	<b>Body :</b> Aluminium <b>Cable:</b> Galvanised Steel Wire	150 mm (5.9 in)	4 x 3.5 mm (0.2 x 0.14 in)	<200 kgf (<440.9 lbf)	21 x 8 mm (0.8 x 0.31 in)	<b>Serial no :</b> 6 <b>Barcode :</b> 6

PACKAGING

Carton	Quantity	Dimensions (mm)	Gross Weight (kg)	Volume (m <sup>3</sup> )	Standard Colours
Inner	500	300 x 270 x 160 (11.8 x 10.6 x 6.3 in)	9.86 (21.7 lb)	0.013 (0.5 cu.ft.)	Body : <span style="background-color: green; color: white; padding: 2px;">G</span> <span style="background-color: red; color: white; padding: 2px;">R</span> <span style="background-color: blue; color: white; padding: 2px;">B</span> <span style="background-color: black; color: white; padding: 2px;">BK</span> <span style="background-color: gold; color: black; padding: 2px;">GD</span> <span style="background-color: silver; color: black; padding: 2px;">SC</span>

For colour customisations, kindly contact us for further information.

Carton size and weight vary according to cable length. Figures shown in the table are for the standard cable length packaging. Please contact us for additional details.

Updated Date : 29 July 2025