

INDICATIVE SEAL

MINI FAST SEAL (MFS)

MINI FAST SEAL TEAR OFF (MFS TO)

Pull-Tight Seal

Small and sophisticated design for comprehensive security and authentication.

Mini Fast Seal is easy to use, compact and perfect for small-sized sealing requirements. It is designed with a slim structure to mainly suit its smaller locking latches application. This delicately designed seal is suitable for security and authentication purposes with saving space in mind. These seals include the BioSphere bio-additive. To provide eco-conscious solutions on a wide array of applications, all Mega Fortris' security seal product lines with plastic content will include the BioSphere bio-additive from 13th May 2024.

Applications:

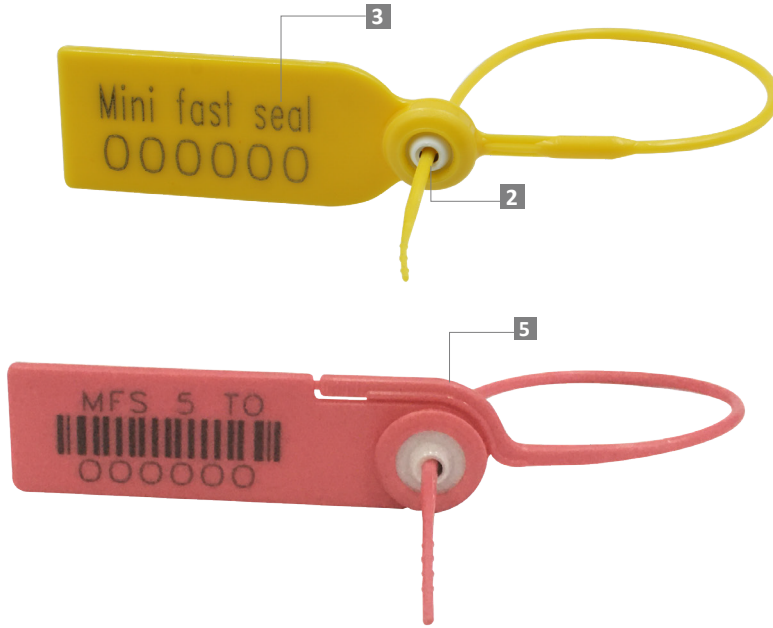
- Retail Applications
- Fire Extinguishers
- Logistics
- Banking



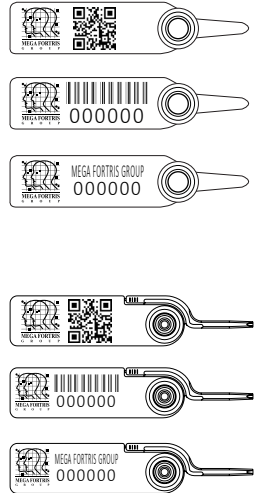
Our biodegradable plastic additives go deeper, allowing microbes to consume the C-C bonds within plastic's structure at a macromolecular level. This increases the surface area of plastic products and enables plastophilic microbes to attach to the polymer's newfound cavities. So, unlike regular plastic that can sit in a landfill for hundreds or thousands of years, plastic enhanced with BioSphere attracts over 600 different types of microbes that effectively digest and consume it.

PREVENTION · PROTECTION · PEACE OF MIND

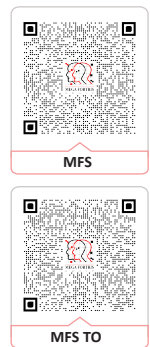




LASER MARKING OPTION

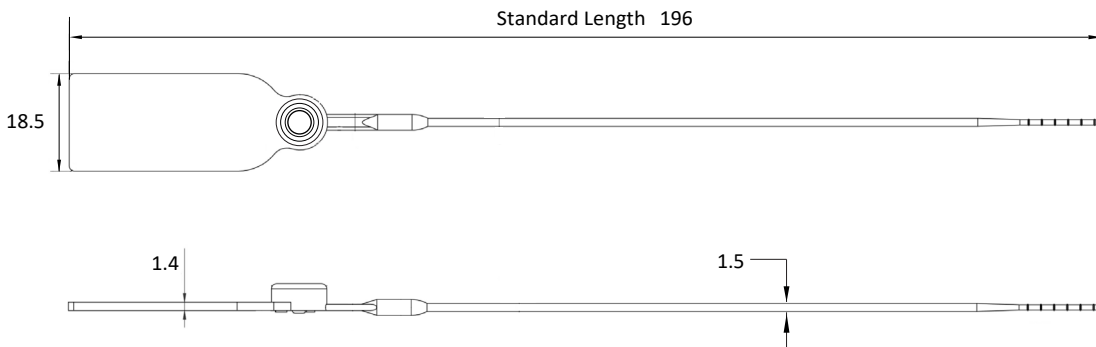


VIEW APPLICATION VIDEO

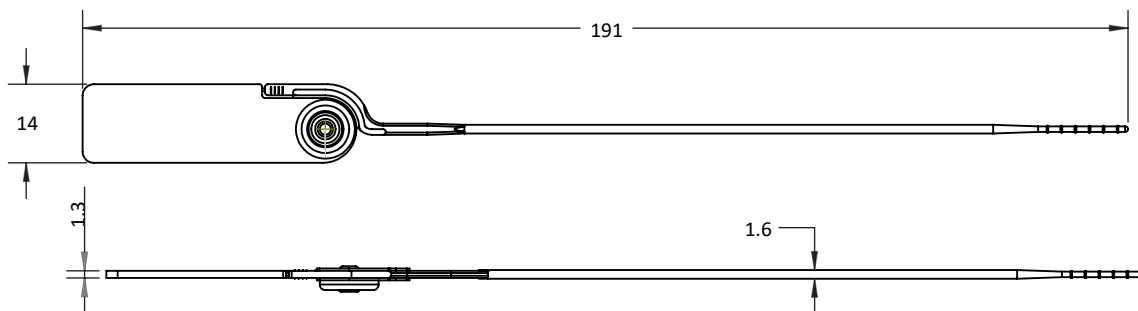


- 1 The Mini Fast Seal is moulded with Polypropylene (PP) or high-impact Nylon (NY) material with the metal lock heat staking encapsulated for greater security and clear evidence of tampering.
- 2 One-way locking mechanism is embedded for fast and easy application.
- 3 Irreversible identifiers such as name, logo, barcode, serial number and QR code are laser-marked on the flap.
- 4 These seals include the BioSphere bio-additive.

MFS



MFS TO



TECHNICAL SPECIFICATIONS

PRODUCT - MINI FAST SEAL (MFS)

Code	Material	Locking Length	Locking Size	Tensile Strength	Marking Area	Max Marking Digits
MFS	Plastic : Polypropylene (PP) <i>Temperature Range:</i> -5°C to 80°C	129 mm (5 in)	Ø 1.5 mm (0.1 in)	PP: ≥8 kgf (≥17.6 lbf)	14 x 32 mm (0.6 x 1.3 in)	Serial no : 10 Barcode : 10
MFS TO	High-impact Nylon (NY) <i>Temperature Range:</i> -20°C to 80°C Metal Jaw : Stainless Steel (SUS 304)			NY: ≥9 kgf (≥19.8 lbf)		

PACKAGING

Carton	Quantity	Dimensions (mm)	Gross Weight (kg)	Volume (m ³)	Standard Pastel / Solid Colours
MFS Inner	1000	255 x 205 x 145 (10.0 x 8.1 x 5.7 in)	1.96 - 1.98 (4.3 - 4.4 lb)	0.008 (0.3 cu.ft.)	Polypropylene : Body : <input type="button" value="WH"/> <input type="button" value="PSYL"/> <input type="button" value="PSOR"/> <input type="button" value="PSRD"/> <input type="button" value="PSBL"/> <input type="button" value="PSGN"/> <input type="button" value="BK"/>
MFS TO Inner					Cap : <input type="button" value="WH"/> <input type="button" value="FR"/>

Nylon :

Body :

Cap :

For colour customisations, kindly contact us for further information.

Updated Date : 29 July 2025