



MEGA FORTRIS
G R O U P

INDICATIVE SEAL

MINI TIGHT SEAL (MTS7)

Pull-Tight Seal

Small yet mighty seal for high strength and strong grip.

Mini Tight Seal is a one piece, fully plastic moulded seal with thin and flexible strap. The ribs around the strap provide better grip on the application surface. The slim structure and relatively shorter strap make the seal ideal for light security applications and requirements with saving space in mind. These seals include the BioSphere bio-additive. To provide eco-conscious solutions on a wide array of applications, all Mega Fortris' security seal product lines with plastic content will include the BioSphere bio-additive from 13th May 2024.

Applications:

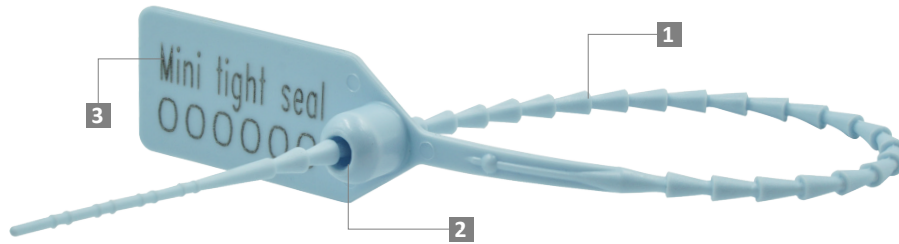
- Retail Applications
- Fire Extinguishers
- Petro-Chemical
- Banking



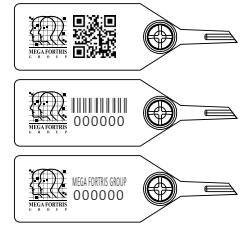
Our biodegradable plastic additives go deeper, allowing microbes to consume the C-C bonds within plastic's structure at a macromolecular level. This increases the surface area of plastic products and enables plastophilic microbes to attach to the polymer's newfound cavities. So, unlike regular plastic that can sit in a landfill for hundreds or thousands of years, plastic enhanced with BioSphere attracts over 600 different types of microbes that effectively digest and consume it.

PREVENTION · PROTECTION · PEACE OF MIND





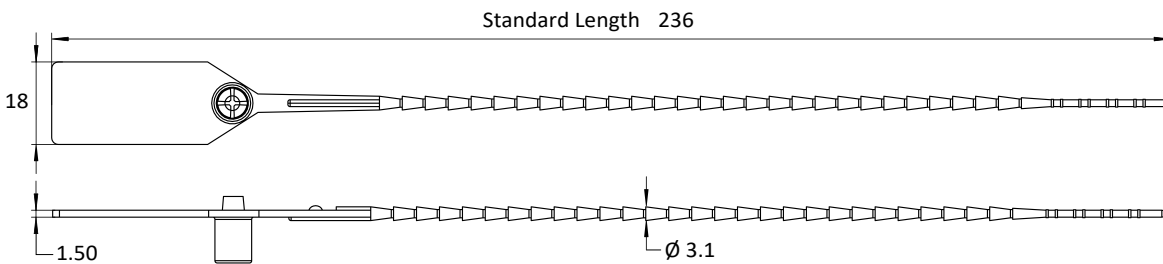
LASER MARKING OPTION



VIEW APPLICATION VIDEO



- 1 The Mini Tight Seal is moulded with Polypropylene (PP) or high-impact Nylon (NY) material.
- 2 One-way locking mechanism is embedded for fast and easy application.
- 3 Irreversible identifiers such as name, logo, barcode, serial number and QR code are laser-marked on the flap.
- 4 These seals include the BioSphere bio-additive.
- 5 Small diameter tail perfect for smaller applications.



PRODUCT - MINI TIGHT SEAL (MTS7)

Code	Material	Locking Length	Locking Size	Tensile Strength	Marking Area	Max Marking Digits
MTS7	Plastic : Polypropylene (PP) <i>Temperature Range:</i> -5°C to 80°C High-impact Nylon (NY) <i>Temperature Range:</i> -20°C to 80°C	165 mm (6 in)	Ø 3.1 mm (0.1 in)	≥10 kgf (≥22.0 lbf)	14 x 32 mm (0.6 x 1.3 in)	Serial no : 12 Barcode : 10

PACKAGING

Carton	Quantity	Dimensions (mm)	Gross Weight (kg)	Volume (m ³)	Standard Pastel / Solid Colours
Inner	1000	450 x 195 x 165 (17.7 x 7.7 x 6.5 in)	1.89 - 2.37 (4.2 - 5.2 lb)	0.014 (0.5 cu.ft.)	Polypropylene : Body : WH PSYL PSOR PSRD PSBL PSGN BK

Nylon :
 Body : WH B YL G RD BK

For colour customisations, kindly contact us for further information.

Updated Date : 29 July 2025