

INDICATIVE SEAL

SP CASH BAG LABEL TAG SEAL (SPCBS LT)

Pull-Tight Seal

Unique design for additional tagging and enhanced security.

SP Cash Bag Label Tag Seal is an advanced design of the SP Cash Bag Seal, which has an additional label tag on the side. This is to allow external tagging or a neat appearance after sealing. The seal has a rigid structure to withstand rough handling and is user-friendly to seal and remove. These seals include the BioSphere bio-additive.

To provide eco-conscious solutions on a wide array of applications, all Mega Fortris' security seal product lines with plastic content will include the BioSphere bio-additive from 13th May 2024.

Applications:

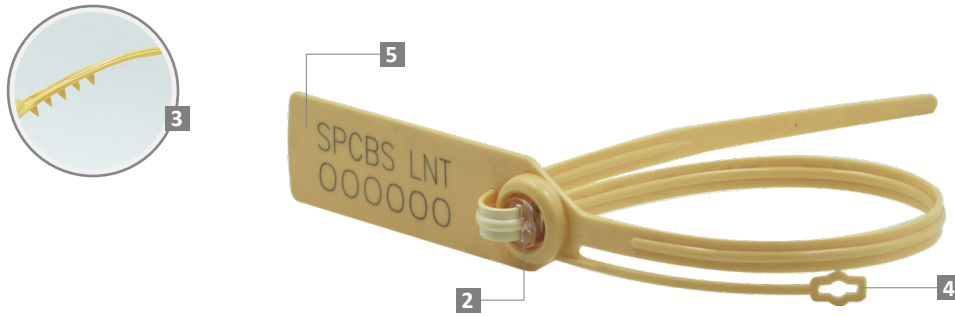
- Retail Applications
- Postal Services
- Logistics
- Banking



Our biodegradable plastic additives go deeper, allowing microbes to consume the C-C bonds within plastic's structure at a macromolecular level. This increases the surface area of plastic products and enables plastophilic microbes to attach to the polymer's newfound cavities. So, unlike regular plastic that can sit in a landfill for hundreds or thousands of years, plastic enhanced with BioSphere attracts over 600 different types of microbes that effectively digest and consume it.

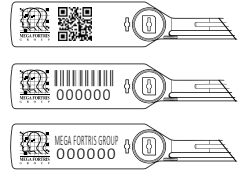
PREVENTION · PROTECTION · PEACE OF MIND



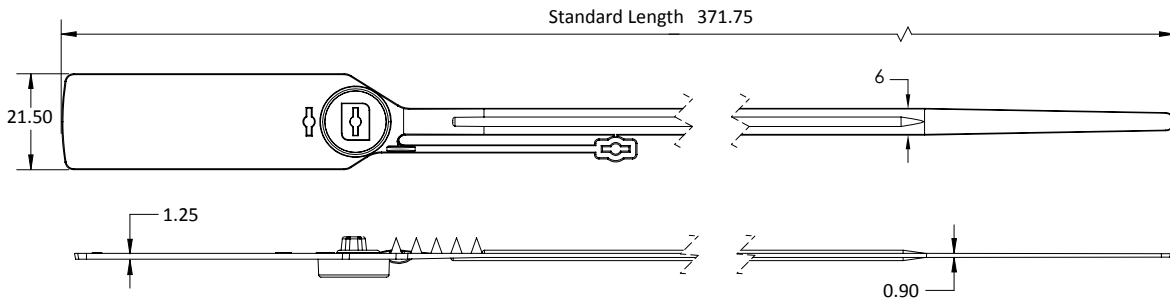


- 1 The SP Cash Bag Label Tag Seal is moulded with high-impact PP or Nylon (NY) material with the metal lock heat staking encapsulated for greater security.
- 2 One-way locking mechanism is embedded for fast and easy application.
- 3 Spikes are placed behind the seal to provide better grip on the application surface.
- 4 Label tag on the side allows for additional tagging and better security.
- 5 The larger flap allows ample space for irreversible laser marking of identifiers such as name, logo, barcode, serial number and QR code.
- 6 These seals include the BioSphere bio-additive.

LASER MARKING OPTION



VIEW APPLICATION GIF



TECHNICAL SPECIFICATIONS

PRODUCT - SP CASH BAG LABEL TAG SEAL (SPCBS LT)

Code	Material	Locking Length	Locking Size	Tensile Strength	Marking Area	Max Marking Digits
SPCBS LT	Plastic : Polypropylene (PP) Temperature Range: -5°C to 80°C Nylon (NY) Temperature Range: -20°C to 80°C Metal Jaw : Stainless Steel (SUS304)	245 mm (10 in)	6.0 mm (0.2 in)	PP: >25 kgf (>55.1 lbf) NY: >28 kgf (>61.7 lbf)	18 x 50 mm (0.7 x 2.0 in)	Serial no : 10 Barcode : 11

PACKAGING

Carton	Quantity	Dimensions (mm)	Gross Weight (kg)	Volume (m ³)	Standard Pastel / Solid Colours
Inner	1000	465 x 260 x 190 (18.3 x 10.2 x 7.5 in)	4.8 (10.58 lb)	0.023 (0.8 cu. ft.)	Polypropylene : Body : WH PSYL PSOR PSRD PSBL PSGN BK Cap : WH FR Nylon : Body : WH B YL G RD BK Cap : WH FR

For colour customisations, kindly contact us for further information.

Updated Date : 10 May 2024