



MEGA FORTRIS
G R O U P

INDICATIVE SEAL **SKY SEAL (SKY)**

Pull-Tight Seal

A flexible security seal with a unique design that allows for additional identification tagging.

Sky Seal is a versatile security seal that offers high security despite its slim tail. The ribs around the strap provide a better grip on the seal as it is applied to secure the assets. A neater appearance can be achieved with tucking the tail through the hole on the flap or a unique identifier can be added by attaching it on the hole.

These seals include the BioSphere bio-additive.

To provide eco-conscious solutions on a wide array of applications, all Mega Fortris' security seal product lines with plastic content will include the BioSphere bio-additive from 13th May 2024.

Applications:

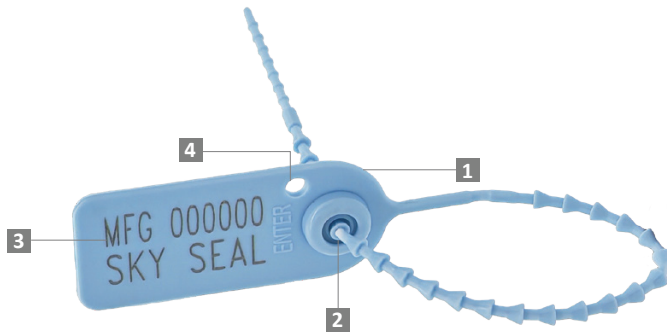
- Retail Applications
- Fire Extinguishers
- Petro-Chemical
- Banking
- Aircraft Cabin Carts



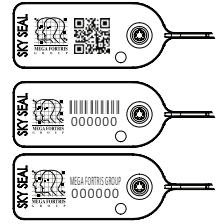
Our biodegradable plastic additives go deeper, allowing microbes to consume the C-C bonds within plastic's structure at a macromolecular level. This increases the surface area of plastic products and enables plastophilic microbes to attach to the polymer's newfound cavities. So, unlike regular plastic that can sit in a landfill for hundreds or thousands of years, plastic enhanced with BioSphere attracts over 600 different types of microbes that effectively digest and consume it.

PREVENTION · PROTECTION · PEACE OF MIND





LASER MARKING OPTION

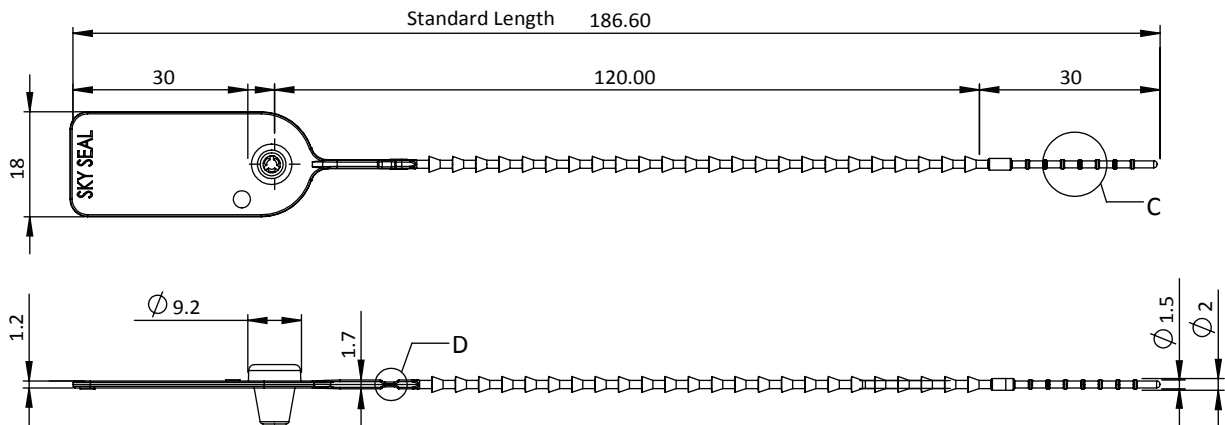


VIEW APPLICATION VIDEO



- 1 The Sky Seal is made from polypropylene (PP) material with an Acetal insert. The Acetal locking mechanism is encapsulated through heat-staking for greater security and clear evidence of tampering.
- 2 One-way locking mechanism is embedded for fast and easy application.
- 3 Irreversible identifiers such as name, logo, barcode, serial number and QR code are laser-marked on the flap.
- 4 The hole on the flap can be used to tuck the tail for a neater appearance or to attach an identifier tag.
- 5 These seals include the BioSphere bio-additive.

Metric



TECHNICAL SPECIFICATIONS

PRODUCT - SKY SEAL (SKY)

Code	Material	Locking Length (mm)	Locking Size (mm)	Tensile Strength (kgf)	Marking Area (mm)	Max Marking Digits
SKY Seal	Plastic : Polypropylene (PP) Temperature Range: -5°C to 80°C	120 (4.72 in)	2.7 (0.11 in)	8 - 10 (17.64 - 22.05 lbf)	18 x 24 (0.71 x 0.94 in)	Serial no : 8 Barcode : 8

PACKAGING

Carton	Quantity	Dimensions (mm)	Gross Weight (kg)	Volume (m ³)	Standard Pastel Colours
SKY Seal Inner	1000	255 x 205 x 145 (10.04 x 8.07 x 5.71 in)	1.65 (3.64 lb)	0.0076 (0.268 cu.ft.)	Body : WH PSYL PSOR PSRD PSBL PSGN BK

For colour customisations, kindly contact us for further information.

Updated Date : 29 July 2025