

INDICATIVE SEAL TAMRA SEAL Application Seal

Rigid structure and precise locking for operation efficiency.

The Tamra Seal has been designed specially to secure the contents of cash boxes and drums. The seal sits tightly when applied and is therefore very useful for applications like coin boxes that fit into a public phone. Be assured of better security with our innovative use of materials and industrial design.

These seals include the BioSphere bio-additive.

To provide eco-conscious solutions on a wide array of applications, all Mega Fortris' security seal product lines with plastic content will include the BioSphere bio-additive from 13th May 2024.

Applications:

- Cash and Coin Boxes
- Drums



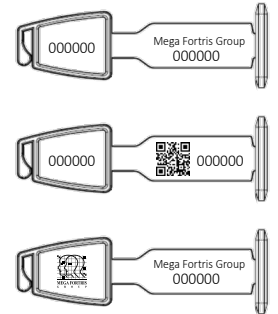
Our biodegradable plastic additives go deeper, allowing microbes to consume the C-C bonds within plastic's structure at a macromolecular level. This increases the surface area of plastic products and enables plastophilic microbes to attach to the polymer's newfound cavities. So, unlike regular plastic that can sit in a landfill for hundreds or thousands of years, plastic enhanced with BioSphere attracts over 600 different types of microbes that effectively digest and consume it.

PREVENTION · PROTECTION · PEACE OF MIND

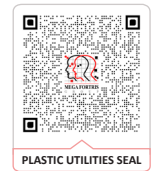




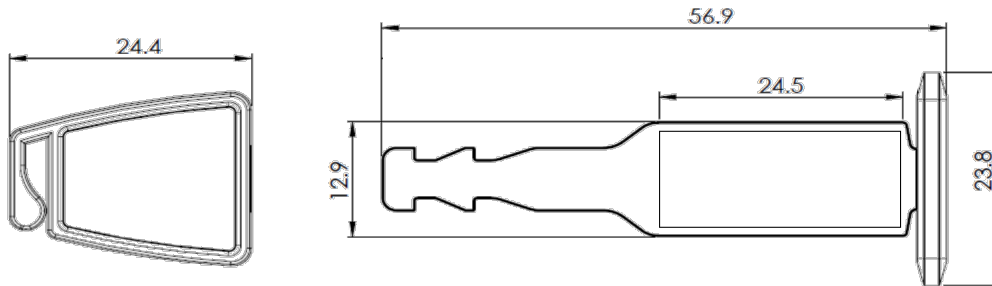
LASER MARKING OPTION



VIEW APPLICATION GIF



- 1 The Tamra Seal features a clear “Inspection Window” on the head of the seal that makes the locking mechanism easily accessible for visual inspection of tampering or manipulation.
- 2 The Tamra Seal has a double locking mechanism for added security.
- 3 The locking mechanism is made of the flexible PP material and the body is moulded from high impact ABS material.
- 4 The Inspection Window is ultrasonically welded onto the seal, so it cannot be removed without showing very clear evidence of tampering.
- 5 The Tamra Seal is etched with permanent laser marking on both parts, which prevents part replacement.
- 6 These seals include the BioSphere bio-additive.



TECHNICAL SPECIFICATIONS

PRODUCT - TAMRA

Code	Material	Measurement	Locking Length	Pull Strength	Marking Area	Max Marking Digits
TAMRA	Body : Acrylonitrile Butadiene Styrene High Impact (ABS HI) Cap : Polypropylene (PP)	Strap : 2.5 mm x 7.0 mm (0.098 in x 0.276 in)	17.0 mm (0.669 in)	35 kg (77.2 lb)	9 mm x 20 mm (0.35 in x 0.79 in)	Serial no : 8 Barcode : 9

PACKAGING

Carton	Quantity	Dimensions (mm)	Gross Weight (kg)	Volume (m ³)	Standard Colours
Inner	1000	334 x 292 x 200 (13.1 x 11.5 x 7.9 in)	3.86 (8.51 lb)	0.01733 (0.612 cu.ft)	Cap : WH FR Body : WH YL OR GN RD BL BK
Outer	5000	454 x 234 x 284 mm (17.9 x 9.2 x 11.2 in)	19.3 (42.5 lb)	0.09450 (3.337 cu.ft)	

For colour customisations, kindly contact us for further information.

Updated Date : 13 May 2024