

TAMPER-EVIDENT SECURITY LABELS

*Security labels are a tamper-evident laminate that “voids” when removed.
They designed for use on cardboard boxes in the packaging industry and
other similar surfaces.*

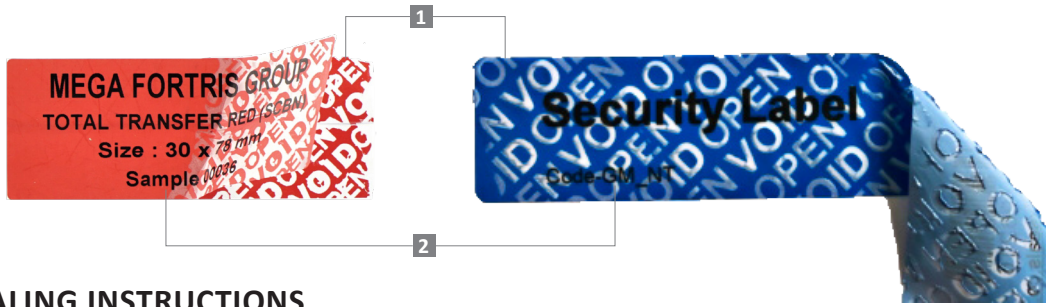
Applications:

- Bags
- Retail Applications
- Courier
- Goods-in-transit
- Postal
- Banking



PREVENTION · PROTECTION · PEACE OF MIND





VIEW APPLICATION GIF



SEALING INSTRUCTIONS

Attention :

It is important to observe and follow the proper sealing methods in order to achieve the optimum results.

- 1 Clean the surface area where you want to apply the label using a clean and dry cloth with special attention for the following conditions :

Wet Conditions :

Using circular motions, wipe the surface repeatedly to ensure it is totally dry before applying the label.

Oily Conditions :

Using a clean cloth damped with a mild detergent, wipe the surface to remove all traces of oil and follow by a dry cloth before applying the label.

Dusty Conditions :




Using a clean and dry cloth, remove all surface dust or grime before applying the label.

Extreme Cold Conditions :

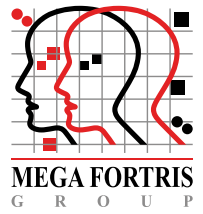
Using a clean and dry cloth, clean the surface by rubbing hard with circular motions, to remove all traces of frozen moist and immediately apply the label before a new layer of frost is formed.

- 2 Using the same dry cloth, press the label firmly using sideways motion repeatedly, to remove all trapped air.

SUITABLE APPLICATION SURFACES

Partial Transfer System	Non Transfer System	Total Transfer System
		
<p>SPECIFICATIONS</p> <ul style="list-style-type: none"> - Does not leave a residue after removal. - Heat and freeze-resistant, and resistant to freon gas. 	<p>SPECIFICATIONS</p> <ul style="list-style-type: none"> - Does not leave a residue after removal. - Heat and freeze-resistant, and resistant to freon gas. 	<p>SPECIFICATIONS</p> <ul style="list-style-type: none"> - Does not leave a residue after removal. - Heat and freeze-resistant, and resistant to freon gas.
<p>TYPICAL APPLICATIONS</p> <ul style="list-style-type: none"> - Metal (Polished or Chrome Plated or Painted) - Smooth surfaced plastics (including PP) - Glass - Laminated surfaces - Fibre board - Corona treated plastic bags/sheets - Wood- Lacquered or painted - Oil-free rubber surface 	<p>TYPICAL APPLICATIONS</p> <ul style="list-style-type: none"> - Metal (Polished or Chrome Plated or Painted) - Smooth & hard surfaced plastics (except PP) - Glass - Laminated surfaces 	<p>TYPICAL APPLICATIONS</p> <ul style="list-style-type: none"> - Fibre board - Smooth surfaced plastics (including PP) - Glass - Laminated surfaces - Wood (lacquered or painted)

Updated Date : 10 May 2024



- 1 TE labels provide you with visual evidence of tampering by revealing a hidden message if the label is lifted.
- 2 TE labels with its self-triggering feature provides an excellent deterrence to theft. Any unauthorised attempt on the asset will show clear tamper evidence.
- 3 TE labels provide users with a simple and clear visual template for inspection purposes. This can help businesses save on operational costs, while preventing losses through pilferage and tampering.
- 4 TE labels are heat and freeze resistant. Any attempt to remove the labels by using a heating element or freon gas will be futile as the hidden message will still trigger when the labels are lifted.
- 5 TE labels are sequentially numbered for security reasons. Customised printing can be printed onto the label face to further enhance identity and security. Barcoding can also be provided as an option for more efficient data recording.
- 6 TE labels have high quality adhesive which is suitable for almost all application surfaces. The adhesive works in both indoor or outdoor environment.
- 7 There are 3 distinct types of Tamper Evident Triggering Systems available for a complete range of applications. The 3 types are:
 - 1) Type PT- Partial Transfer System
 - 2) Type TT- Total Transfer System
 - 3) Type NT- Non Transfer System

VIEW APPLICATION GIF



TECHNICAL SPECIFICATIONS

SPECIFICATIONS	STORAGE CONDITION	TYPICAL APPLICATIONS
<ul style="list-style-type: none"> • Material : Polyester • Adhesives : Rubber & Acrylic • Thickness : 55- 95 mil • Adhesion : > 800 g/25mm • Initial Tack : < 10 	<ul style="list-style-type: none"> • Preserve a constant temperature of 20-30 degrees celcius. • Avoid prolonged exposure to high humidity. 	<ul style="list-style-type: none"> • Sensitive documents and Security Envelopes • Cartons and Boxes • IT Equipments • Evidence Bags • First Aid Boxes • Utility Meters and Valves • Cash Boxes and Automatic Teller Machines • Glass and Plastic Containers • Military Equipment • Ballot Boxes • Canisters and Drums • Food and Beverage Containers
BASIC CHARACTERISTICS OF SELF ADHESIVE TE LABELS		
<p>1. Base Material All TE Labels are made from polyester film.</p> <p>2. Adhesives Partial Transfer System - Rubber base Non Transfer System - Acrylic base Total Transfer System - Acrylic base</p> <p>3. Release Liner Partial Transfer System - OPP film or White paper Non Transfer System - White paper only Total Transfer System - White paper only</p> <p>4. Surface Either Matt finish or Gloss finish</p> <p>5. Packing Either in rolls (standard) or sheets</p> <p>6. Optional features</p> <ul style="list-style-type: none"> - Bar coding - Solvent resistant ink printing - Lamination - Security cuts - Security ink- Invisible ink printing - Serial numbers in sets - Holographic lamination 		

Updated Date : 10 May 2024