

# MEGA FORTRIS SMART SECURITY ECOSYSTEM

The future of cargo security is visible.

Powered by  
**gritcargo**

Contact us today: ☎ +60 3 5112 6118 ✉ [enquiries@megafortris.com](mailto:enquiries@megafortris.com) 🌐 [www.megafortris.com](http://www.megafortris.com)

PREVENTION · PROTECTION · PEACE OF MIND





PREVENTION · PROTECTION · PEACE OF MIND

www.megafortris.com

Powered by  
**gritcargo**

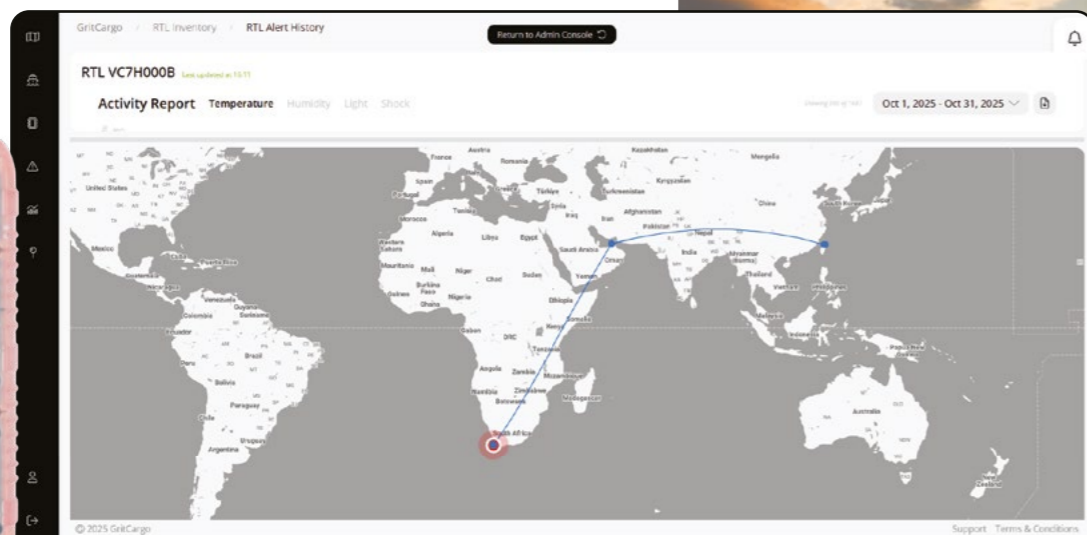
# Your Window into Every Shipment.

Because control starts with **visibility.**

## Complete Cargo Security Solutions

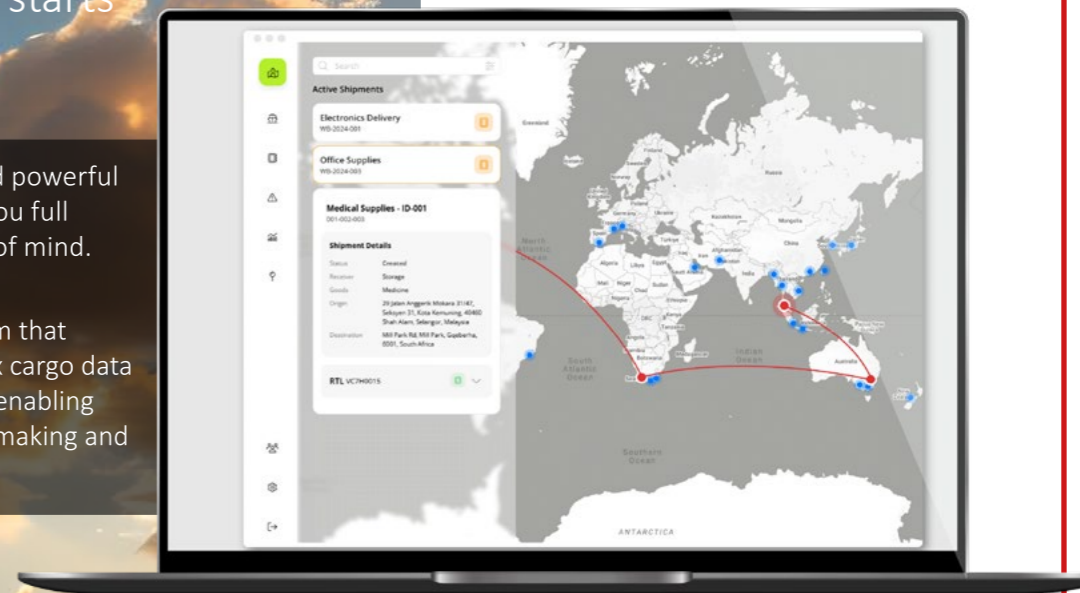
Integrated hardware and software enabling proactive decision-making.

Powered by  
**gritcargo**



Smart software and powerful hardware. Giving you full control and peace of mind.

Easy-to-use platform that transforms complex cargo data into instant clarity, enabling proactive decision-making and reduces risks.



### Interactive World Map

See your shipments move between cities and across continents with live location tracking.

### Historical Data

Access recorded data from the entire trip: temperature, humidity, tilt/shock, and location. Giving you the tools to review performance and prove compliance.

### Real-Time Logger Integration

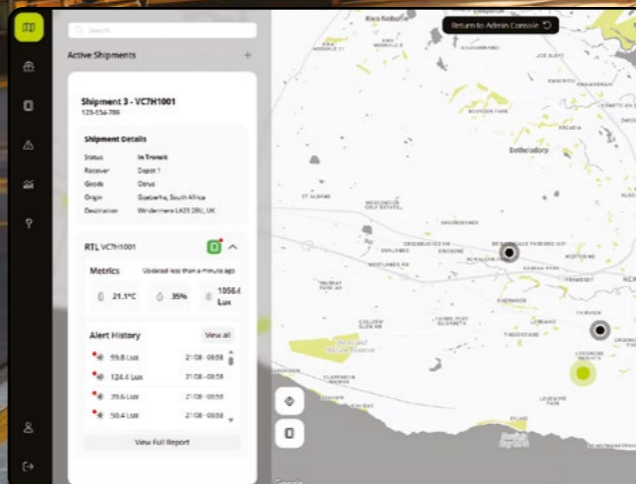
Live data on location and cargo conditions to empower proactive decisions when and where it matters.

### Detailed Shipment Cards

Access key details for your shipments in one place.

Mega Fortris Smart Security Ecosystem is the **end-to-end visibility platform** for global logistics. Engineered in collaboration with GritCargo, it empowers freight forwarders, exporters, and logistics providers to monitor, manage and move goods more efficiently and securely.

The Mega Fortris Smart Security Ecosystem provides **real-time data, smart sensors and a powerful AI-enabled software platform** to give you **total visibility and control of your assets** from dispatch to delivery.



Alert	Time	Status
15.8°C Low	21:08 - 08:59	Resolved
12.4°C Low	21:08 - 08:59	Resolved
39.6°C High	21:08 - 08:59	Resolved
50.4°C High	21:08 - 08:59	Resolved

# What is an RTL?

(Real-Time Logger)

An RTL (Real-Time Logger) is a smart, connected data logger that captures environmental and handling conditions (like temperature, humidity, light, tilt/shock, and location) and transmits them to the cloud via cellular networks.

Unlike traditional “record-only” loggers that must be retrieved and downloaded after delivery, an RTL streams live data at predetermined intervals throughout the journey, so teams can see issues as they occur and act immediately — reroute, notify a 3PL, adjust cooling, or instruct a driver — before quality is compromised.



- GPS and Cell Positioning
- Temperature and Humidity
- Light Exposure
- Shock and Tilt Events
- 2G/4G/5G Global Roaming Sim
- Up to 60 or 120-Day Trip Length
- 12-month Shelf Life Prior to Activation

# How Our Solution Works.

iMSense with GritCargo is a smart security solution that gives you complete visibility over every shipment.

## Activate your RTL

Once activated, your iMSense LCD will light up and you will start receiving live data.

## Attach to Shipment

Using the provided double-sided tape, you can easily secure the iMSense RTL to the last pallet at chest height, facing the doors.

## Track on the Dashboard

Log into the iM Dashboard to monitor the trip live and get alerts when anything happens to your cargo.

## Get Actionable Data

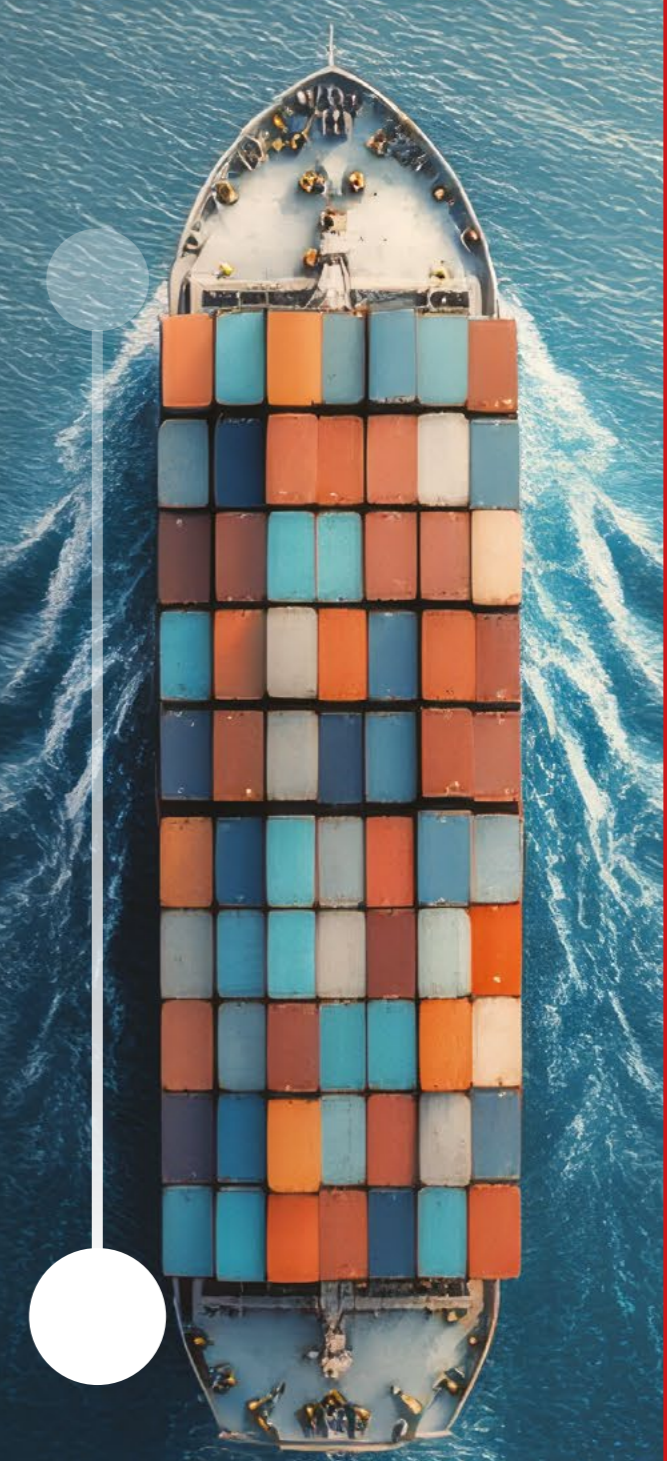
Using the iMSense smart alert system allows you to make real-time corrective actions, ensuring the safety of your cargo and your peace of mind.

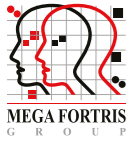
## Upon Arrival

Use the reports to assist with QA acceptance or rejection processes, and to collect all available intelligence and analytics.

## Why it Matters

For cold chains, fresh produce, pharmaceuticals and fragile goods, minutes matter. Real-time insights prevent losses, streamline compliance, and deliver timely shipments with a verifiable digital audit trail.





PREVENTION · PROTECTION · PEACE OF MIND

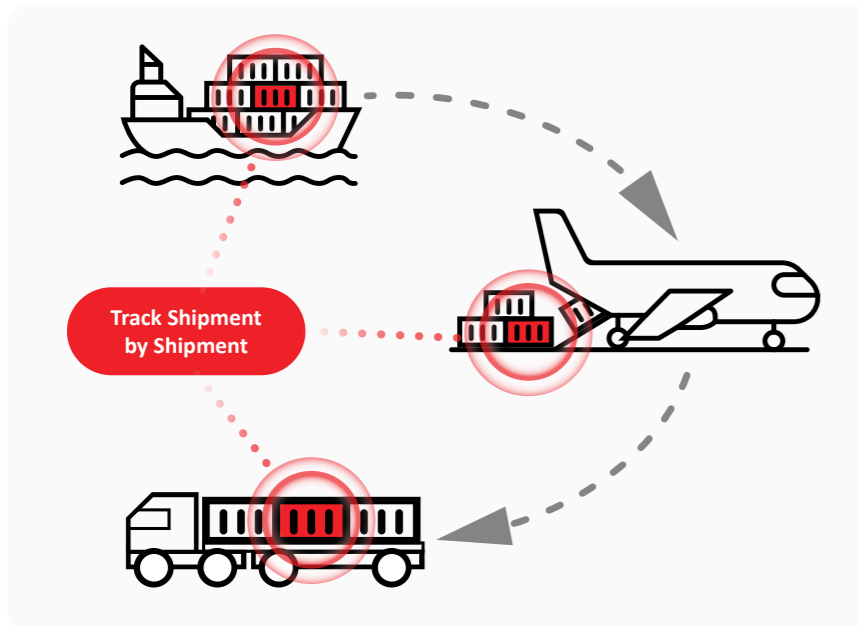
[www.megafortris.com](http://www.megafortris.com)

# A System Designed to Support Your Needs.

The iM Dashboard delivers clear, transparent shipment information and offers features that streamline processes to enhance your experience:

## Track Shipment by Shipment

Move beyond single-trip devices. Maximise shipment value across a single device lifecycle. iMSense devices are fully charged devices that can track your shipments once they are activated.



Activated once, iMSense can be redeployed across multiple shipments, returning to the RTL pool after each trip until the battery is exhausted.

## Multilingual Support



The default language is English. However, a fully localised Spanish interface is available throughout the dashboard, including tutorials and AI support. Additional language will be added soon.



Powered by **gritcargo**

**iMSense**  
Support Hub  
Powered by **gritcargo**



## Local Support Network

iMSense users benefit from a decentralised support service, where local teams are empowered to deliver efficient customer experiences.

Customers receive quicker onboarding, faster account management and more responsive support, as local teams manage these processes directly through our portal. This increased autonomy reduces delays and streamlines the overall experience.

## Efficient Management for High-Volume Shipments

The iM Dashboard enables you to add shipments and RTLs in bulk, allowing for fast and efficient management with minimal upload time.

To simplify monitoring, the dashboard provides full control and visibility over each shipment, along with customisable filters so you can focus on the information most relevant to you.

## 24/7 Support and Guidance

We offer a comprehensive database of support documents and video tutorials to help you use the platform effectively. Please scan the QR code above to access these resources.



PREVENTION · PROTECTION · PEACE OF MIND

www.megafortris.com

Powered by  
**gritcargo**

# Why choose iMSense?

Ensure the safety and integrity of your perishable or fragile cargo from Farm to table with iMSense, the ultimate real-time logging solution.

- Monitors and records location, temperature, light, tilt/shock and humidity in real time for perishable or fragile cargo.
- Customisable parameter settings for high or low alerts thresholds.
- No need to open container or vehicle doors to access information in order to make immediate cargo safety decisions.
- 24/7 cloud service to view and analyse data remotely, supported by global SIM coverage.
- Extended battery life: 12-month shelf life rechargeable prior to activation.
- Activated once, iMSense can be redeployed across multiple shipments, returning to the RTL pool after each trip until the battery is exhausted.

Temperature

GPS Positioning

Humidity

Shock Events

Light Exposure

5G Global Roaming

60/120 Day Trip Length

12-month Shelf Life

### Flexible Monitoring

Adjustable trip life and customisable reporting intervals give you full control over how and when data is captured and transmitted.

### Adjustable Trip Life and Reporting Intervals

Choose the monitoring duration that matches your shipment timeline (settable via dashboard):  
Up to 60 or 120 days of active monitoring. Each option is optimised with matching data intervals to balance detail and battery life.

## iMSense V5

### Single-Activation Real-Time Logger

Environmental and location monitoring for high-value or at-risk cargo.

Feature	Specification
Use Type	Single-Activation (Max 120 Days)
Shelf Life	12 Months (Rechargeable prior to activation)
Tilt Measurement	3-axis Tilt, 0.1° Resolution
Temperature Sensor	Internal (NIST Traceable)
Temperature Range	-30°C to +70°C (-22°F to 158°F)
Temperature Accuracy	±0.5°C (-20°C to +40°C); ±1°C otherwise
Humidity Range	5% - 95% RH
Humidity Accuracy	±3% (20% - 80% RH); ±5% otherwise
Resolution	Temperature: 0.1°C; Humidity: 1% RH
Light Sensor	0-52,000 Lux Range (Detects door/cartoon opening)
Memory Capacity	Max 28,800 readings
Data Logging Interval	10/20/30/60/120 Minutes (Configurable)
Data Reporting Interval	10/20/30/60/120 Minutes (Configurable)



# iMSense Real-Time Loggers

### Your Eyes on Every Shipment.

iMSense RTLs report directly into the iM Dashboard, enabling real-time alerts at predetermined intervals, route history display and data on cargo locations.

You set the **parameters**. You get the **alerts**. No **blind spots**.

# iMSense V5 Probe

## Single-Activation Real-Time Logger

The iMSense V5 Probe is engineered for cold chain excellence, offering dual-temperature monitoring from -40°C to +80°C externally and -30°C to +70°C internally.



Environmental Rating: IP64  
Cold Chain PDF Report: Available via GritCargo cloud platform  
Dimensions/Weight: 103 x 61.3 x 23 mm / 250 grams  
Certifications: FCC, CE, RTCA/DO-160G, UN38.3, RoHS, WEEE, EN12830  
Storage Temperature Range: -10°C to +55°C

Feature	Specification
Use Type	Single-Activation (Max 120 Days)
Shelf Life	12 Months (Rechargeable prior to activation)
Tilt Measurement	3-axis Tilt, 0.1° Resolution
Temperature Sensor	Dual Temperature Internal (NIST Traceable)
Temperature Range	(Internal) -30°C to +70°C (-22°F to 158°F) (External) -40°C to 80°C (-40°F to 176°F)
Temperature Accuracy	±0.5°C (-20°C to +40°C); ±1°C otherwise
Humidity Range	5%–95% RH
Humidity Accuracy	±3% (20%–80% RH); ±5% otherwise
Resolution	Temperature: 0.1°C; Humidity: 1% RH
Light Sensor	0–52,000 Lux Range (Detects door/carton opening)
Memory Capacity	Max 28,800 readings
Data Logging Interval	10/20/30/60/120 Minutes (Configurable)
Data Reporting Interval	10/20/30/60/120 Minutes (Configurable)

# iMSense V5 Shock

## Single-Activation Real-Time Logger

Designed for precision shock detection. Featuring millisecond-level sampling and 0.1G accuracy, it tracks 3-axis acceleration, temperature, humidity, light, tilt, and motion.



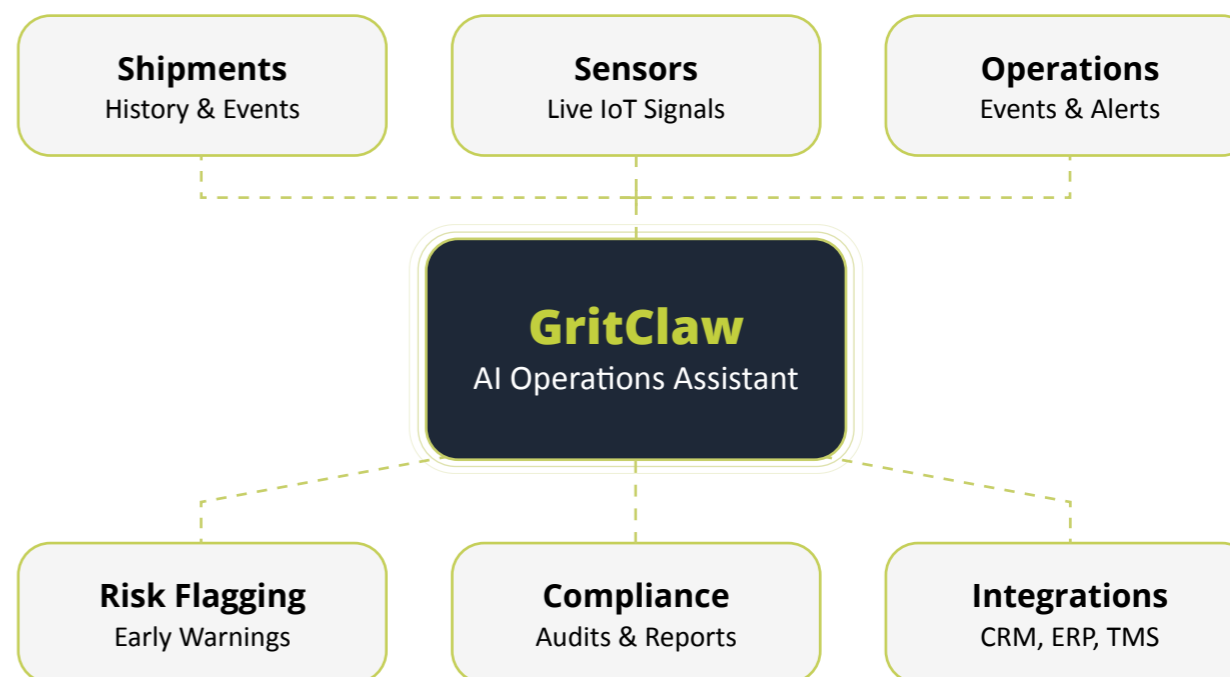
Environmental Rating: IP64  
Dimensions/Weight: 103 x 61.3 x 23 mm / 160 grams  
Certifications: FCC, CE, RTCA/DO-160G, UN38.3, RoHS, WEEE, EN12830, 70+ Airlines Approvals  
Storage Temperature Range: -10°C to +55°C

Feature	Specification
Use Type	Single-Activation (Max 60 Days)
Shelf Life	12 Months (Rechargeable prior to activation)
Shock Measurement	3-axis Acceleration, 0-27G Range, 0.1G Accuracy, Millisecond Sampling
Tilt Measurement	3-axis Tilt, 0.1° Resolution
Temperature Sensor	Internal (NIST Traceable)
Temperature Range	-30°C to +70°C (-22°F to 158°F)
Temperature Accuracy	±0.5°C (-20°C to +40°C); ±1°C otherwise
Humidity Range	5%–95% RH
Humidity Accuracy	±3% (20%–80% RH); ±5% otherwise
Resolution	Temperature: 0.1°C; Humidity: 1% RH
Light Sensor	0–52,000 Lux Range (Detects door/carton opening)
Memory Capacity	Max 28,800 readings
Data Logging Interval	10/20/30/60/120 Minutes (Configurable)
Data Reporting Interval	10/20/30/60/120 Minutes (Configurable)

Coming Soon

# GritClaw

GritClaw works alongside your operations team, turning your cargo data into action - automatically, securely, and with full accountability.



**Proactive Risk Flagging**  
Spots exceptions and risks before they escalate, so your team acts on early signals.

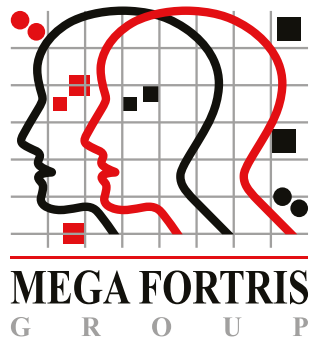
**Automated Compliance**  
Compliance checks, KPI reporting, route audits, and issue follow-ups run continuously.

**Secure & Accountable**  
Every action is logged, tracked, and auditable. Clear guardrails. Full visibility.

**Seamless Integration**  
Fits into CRMs, ERPs, TMS, email, and collaboration tools your team already uses.

**It doesn't just show you what's happening. It takes care of it.**

**gritclaw.ai GRITCARGO DOES THE WORK. YOU STAY IN CONTROL.**



Mega Fortris Berhad  
(Reg. No. 199801004408 (460535-H))

**Contact us today:** ☎ +60 3 5112 6118    ✉ [enquiries@megafortris.com](mailto:enquiries@megafortris.com)    🌐 [www.megafortris.com](http://www.megafortris.com)

PREVENTION · PROTECTION · PEACE OF MIND

