

INDICATIVE SEAL

FORT CASH BAG SEAL (FCBS)

Pull-Tight Seal

Indicative seal paradigm for security and authentication.

Fort Cash Bag Seal is a classic indicative seal with a flat strap for tight securing of assets. With a variety of options for strap lengths and a greater space for laser marking. The spikes on the back and the locking ribs on both sides of the seal give enhanced security, as well as clear evidence of tampering. These seals include the BioSphere bio-additive. To provide eco-conscious solutions on a wide array of applications, all Mega Fortris' security seal product lines with plastic content will include the BioSphere bio-additive from 13th May 2024.

Applications:

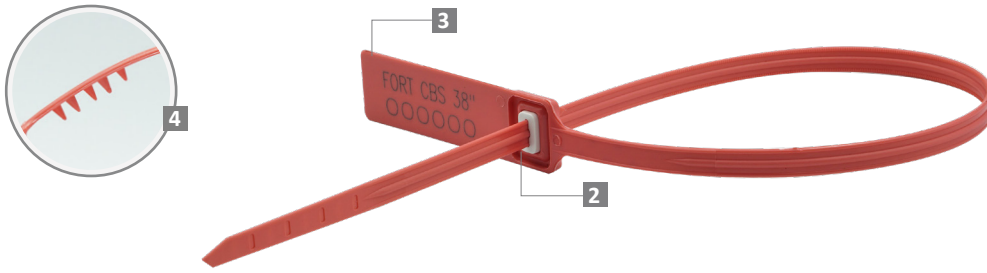
- Pharmaceutical
- Petro-Chemical
- Retail Applications
- Postal Services
- Logistics
- Banking



Our biodegradable plastic additives go deeper, allowing microbes to consume the C-C bonds within plastic's structure at a macromolecular level. This increases the surface area of plastic products and enables plastophilic microbes to attach to the polymer's newfound cavities. So, unlike regular plastic that can sit in a landfill for hundreds or thousands of years, plastic enhanced with BioSphere attracts over 600 different types of microbes that effectively digest and consume it.

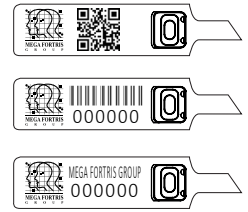
PREVENTION · PROTECTION · PEACE OF MIND



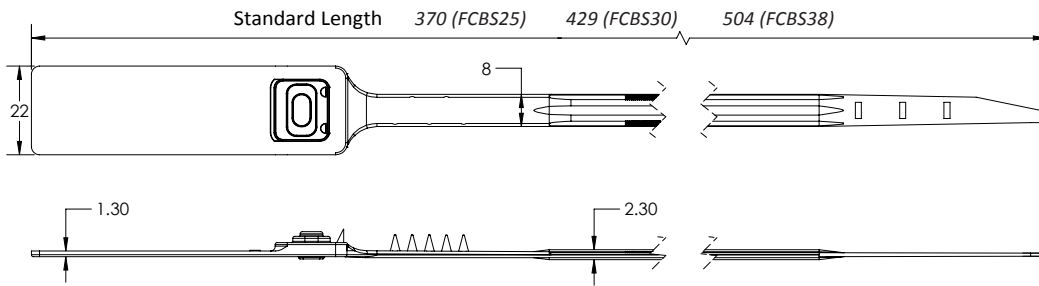


- 1 The Fort Cash Bag Seal is moulded with Polypropylene (PP) or high-impact Nylon (NY) material with the metal lock ultrasonically and heat staking encapsulated for greater security and clear evidence of tampering.
- 2 One-way locking mechanism is embedded for fast and easy application.
- 3 Spikes are placed behind the seal to provide better gripping on the application surface.
- 4 These seals include the BioSphere bio-additive.
- 5 Different strap lengths are available to cater to different applications.

LASER MARKING OPTION



VIEW APPLICATION GIF



TECHNICAL SPECIFICATIONS

PRODUCT - FORT CASH BAG SEAL (FCBS)

Code	Material	Locking Length	Locking Size	Tensile Strength	Marking Area	Max Marking Digits
FCBS25	Plastic : Polypropylene (PP) <i>Temperature Range:</i> -5°C to 80°C Metal Jaw : Stainless Steel (SUS 304)	247 mm (10 in)	8.0 mm (0.3 in)	≥35 kgf (≥77.2 lbf)	14 x 34 mm (0.6 x 1.3 in)	Serial no : 13 Barcode : 12
FCBS30		306 mm (12 in)				
FCBS38		380 mm (15 in)				

PACKAGING

Carton	Quantity	Dimensions (mm)	Gross Weight (kg)	Volume (m ³)	Standard Pastel / Solid Colours
FCBS25 Inner	1000	568 x 235 x 210 (22.4 x 9.3 x 8.3 in)	6.16 (13.58 lb)	0.028 (0.99 cu.ft.)	Polypropylene : Body : WH PSYL PSOR PSRD PSBL PSGN BK Cap : WH FR Nylon : Body : WH B YL G RD BK Cap : WH FR
FCBS30 Inner			6.5 (14.3 lb)		
FCBS38 Inner		615 x 280 x 280 (24.2 x 11.0 x 11.0 in)	7.4 (16.3 lb)	0.048 (1.7 cu.ft.)	

For colour customisations, kindly contact us for further information.

Updated Date : 10 May 2024