

INDICATIVE SEAL

FORT DOUBLE TWIN LOCK (FDTL)

Pull-Tight Seal

Double locking mechanism for peace of mind.

Fort Double Twin Lock is special from other indicative plastic seals for its double locking mechanism in a one-piece structure. It has locking ribs on both sides of the strap for better grip and clear signs of tamper evidence. With a full body made of plastic material, full decomposition is achievable. These seals include the BioSphere bio-additive. To provide eco-conscious solutions on a wide array of applications, all Mega Fortris' security seal product lines with plastic content will include the BioSphere bio-additive from 13th May 2024.

Applications:

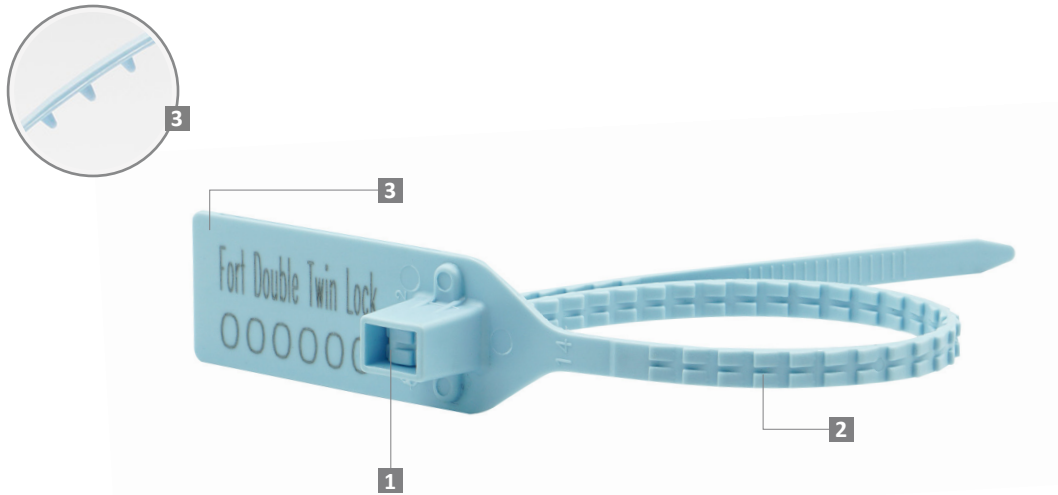
- Retail Applications
- Postal Services
- Logistics
- Banking



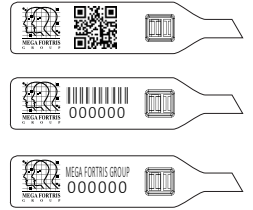
Our biodegradable plastic additives go deeper, allowing microbes to consume the C-C bonds within plastic's structure at a macromolecular level. This increases the surface area of plastic products and enables plastophilic microbes to attach to the polymer's newfound cavities. So, unlike regular plastic that can sit in a landfill for hundreds or thousands of years, plastic enhanced with BioSphere attracts over 600 different types of microbes that effectively digest and consume it.

PREVENTION · PROTECTION · PEACE OF MIND





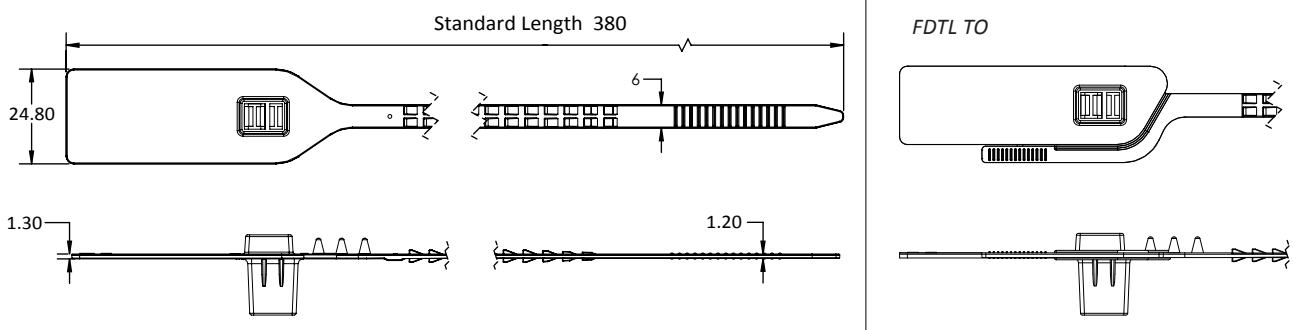
LASER MARKING OPTION



VIEW APPLICATION GIF



- 1 The Fort Double Twin Lock features a double locking mechanism in its fully Polypropylene (PP) moulded body for added security and durability.
- 2 The locking ribs on the seal provide better grip and stronger endurance during application. Tamper evidence signs are obvious on the strap.
- 3 Spikes are placed behind the seal to provide better gripping on the application surface.
- 4 The larger flap allows ample space for identifier marking. Irreversible identifiers such as name, logo, barcode, serial number and QR code are laser-marked on the flap.
- 5 These seals include the BioSphere bio-additive.
- 6 Tear-off (TO) variation is available for easy removal.



TECHNICAL SPECIFICATIONS

PRODUCT - FORT DOUBLE TWIN LOCK (FTDL)

Code	Material	Locking Length	Locking Size	Tensile Strength	Marking Area	Max Marking Digits
FTDL	Plastic : Polypropylene (PP) Temperature Range: -5°C to 80°C	230 mm (9.1 in)	6.0 mm (0.2 in)	>25 kgf (>55.1 lbf)	16 x 40 mm (0.6 x 1.6 in)	Serial no : 12 Barcode : 12

PACKAGING

Carton	Quantity	Dimensions (mm)	Gross Weight (kg)	Volume (m³)	Standard Pastel Colours
Inner	1000	562 x 316 x 244 (22.1 x 12.4 x 9.6 in)	6.14 (13.5 lb)	0.043 (1.5 cu.ft.)	Body : WH PSYL PSOR PSRD PSBL PSGN BK

For colour customisations, kindly contact us for further information.

Updated Date : 10 May 2024