



**MEGA FORTRIS**  
G R O U P

## **HIGH SECURITY SEAL**

# **MEDIUM CABLE LOCK 350 (MCL 350) MEGA CABLE LOCK 350 2B (MCL 350 2B)**

**Pull-Tight Barrier Seal**

***Sleek and simple locking mechanism for high security standards.***

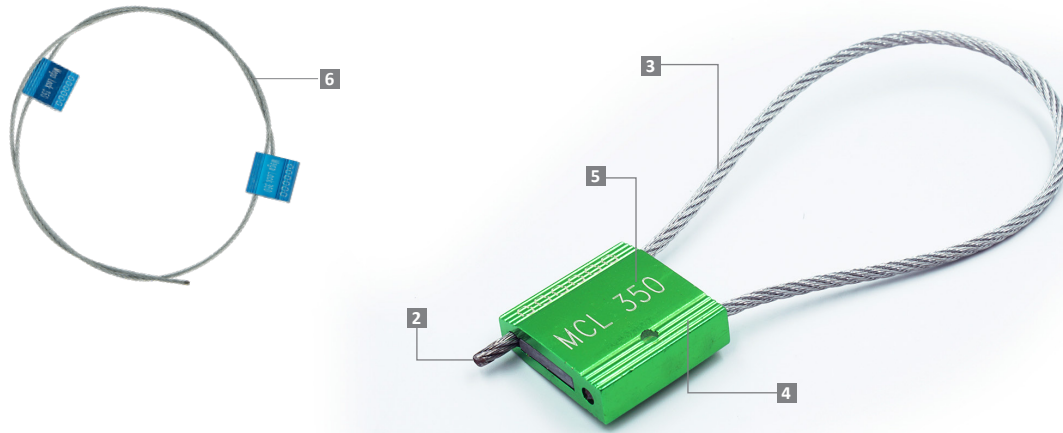
Medium Cable Lock 350 and Mega Cable Lock 350 2B are fully steel-made high-security cable seal designed to secure high-value assets. The Mega Cable Lock 350 2B version includes two locking bodies for a single length of wire. This version is designed for longer cable lengths and provides greater strength and security. Both versions comply to ISO 17712 and CTPAT with a precisely designed locking mechanism.

### **Applications:**

- Containers
- Trucks
- Trailers
- Rail Cars

PREVENTION · PROTECTION · PEACE OF MIND



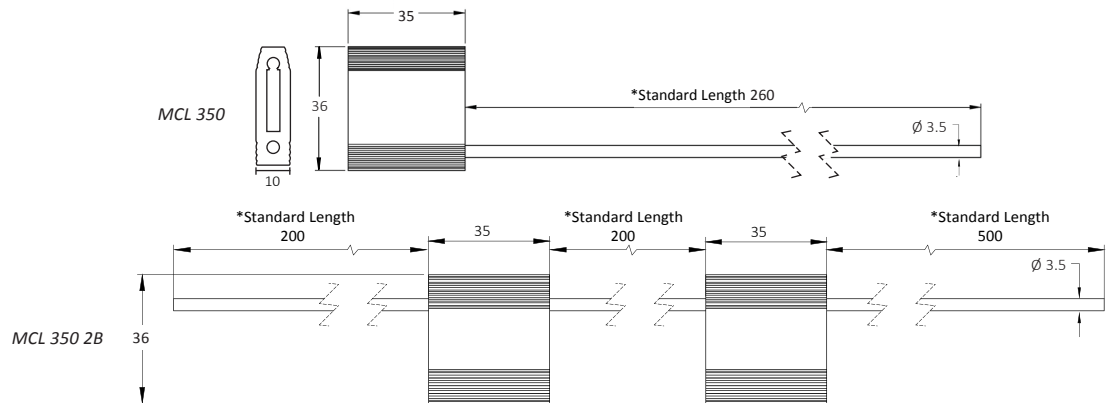


- 1 The Medium Cable Lock 350 consists of an aluminium body and steel wire that is pulled to tightly secure high-value assets and provide clear tell-tale signs of tampering.
- 2 Mega Cable Lock 350 2B features two locking bodies and extra length steel wire for additional security and locking adaptability.
- 3 One-way locking mechanism is embedded for fast and easy application.
- 4 The non-preformed galvanised steel wire unravels upon cutting to show clear evidence of tampering.
- 5 The rib exterior of the aluminium body is designed to protect the laser markings during rough handling with anodisation of solid colour for colour coding.
- 6 Irreversible identifiers such as name, logo, barcode, serial number and QR code are laser-marked on the aluminium body.
- 7 The seal is designed, tested and certified ISO 17712:2013.

LASER MARKING OPTION



VIEW APPLICATION GIF



TECHNICAL SPECIFICATIONS

\*Customisable cable length upon request.

PRODUCT - MEDIUM CABLE LOCK 350 (MCL 350) & MEGA CABLE LOCK 350 2B (MCL 350 2B)

| Code       | Material  | Cable Length        | Cable Diameter       | Tensile Strength            | Marking Area                  | Max Marking Digits           |
|------------|---|---------------------|----------------------|-----------------------------|-------------------------------|------------------------------|
| MCL 350    | Body : Aluminium<br>Cable : Galvanised Steel Wire | 200 mm<br>(7.9 in)  | Ø 3.5 mm<br>(0.1 in) | <1000 kgf<br>(<2204.62 lbf) | 18 x 31 mm<br>(0.71 x 1.2 in) | Serial no : 6<br>Barcode : 7 |
| MCL 350 2B |   | 900 mm<br>(35.4 in) |                      |                             |                               |                              |

PACKAGING

| Carton           | Quantity | Dimensions (mm)                           | Gross Weight (kg) | Volume (m <sup>3</sup> ) | Standard Colours   |
|------------------|----------|---|-------------------|--------------------------|--|
| MCL 350 Inner    | 250      | 450 x 250 x 135<br>(17.7 x 9.8 x 5.3 in)  | 13.0<br>(28.7 lb) | 0.015<br>(0.5 cu.ft.)    | Body : <span style="background-color: green; color: white; padding: 2px;">G</span> <span style="background-color: red; color: white; padding: 2px;">R</span> <span style="background-color: blue; color: white; padding: 2px;">B</span> <span style="background-color: black; color: white; padding: 2px;">BK</span> <span style="background-color: gold; color: black; padding: 2px;">GD</span> <span style="background-color: grey; color: black; padding: 2px;">SC</span> |
| MCL 350 2B Inner | 50       | 300 x 270 x 160<br>(11.8 x 10.6 x 6.3 in) | 7.0<br>(15.4 lb)  | 0.013<br>(0.458 cu.ft.)  |  |

For colour customisations, kindly contact us for further information.

Carton size and weight vary according to cable length. Figures shown in the table are for the standard cable length packaging. Please contact us for additional details.

Updated Date : 10 May 2024