

## INDICATIVE SEAL

# MEGA ARROW SEAL (MARW)

### Fixed Length Seal

***Inspection window and ribbed surface for instantaneous security inspection.***

Mega Arrow Seal features an inspection window and contrasting colour locking mechanism for rapid security inspection. The ribbed surface on the strap provides better grip and quick sealing to ease the operation. Additional security breaking lines are designed for clear evidence of tampering.

These seals include the BioSphere bio-additive.

To provide eco-conscious solutions on a wide array of applications, all Mega Fortris' security seal product lines with plastic content will include the BioSphere bio-additive from 13th May 2024.

**Applications:**

- Retail Applications
- Chemical and Oil Refinery
- Warehousing and Logistics
- F&B Applications



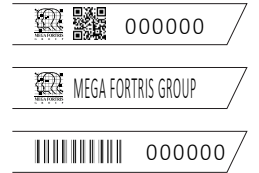
Our biodegradable plastic additives go deeper, allowing microbes to consume the C-C bonds within plastic's structure at a macromolecular level. This increases the surface area of plastic products and enables plastophilic microbes to attach to the polymer's newfound cavities. So, unlike regular plastic that can sit in a landfill for hundreds or thousands of years, plastic enhanced with BioSphere attracts over 600 different types of microbes that effectively digest and consume it.

**PREVENTION · PROTECTION · PEACE OF MIND**

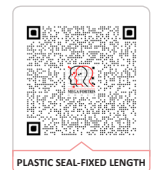




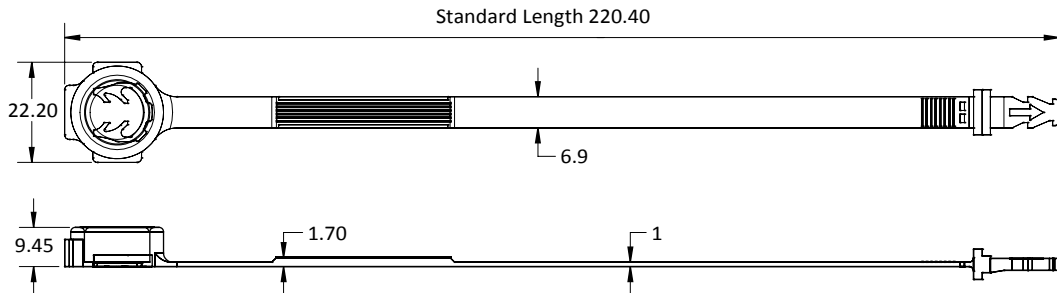
LASER MARKING OPTION



VIEW APPLICATION GIF



- 1 The Mega Arrow Seal is moulded with Polypropylene (PP) material with an inspection window ultrasonically and heat staking welded to its base for clear visual of locking and evidence of tampering.
- 2 One-way double locking mechanism is embedded for fast and easy application.
- 3 Colour-contrast locking insert to prevent tampering and provide better security inspection.
- 4 The strap and breaking point are designed with additional security breaking lines for easy removal and to clearly show evidence of tampering.
- 5 Irreversible identifiers such as name, logo, barcode, serial number and QR code are laser-marked on the strap.
- 6 These seals include the BioSphere bio-additive.



TECHNICAL SPECIFICATIONS

PRODUCT - MEGA ARROW SEAL (MARW)

Code	Material	Locking Length	Locking Size	Tensile Strength	Marking Area	Max Marking Digits
MARW	<b>Body and Cap :</b> Polypropylene (PP) Temperature Range: -5°C to 80°C <b>Insert :</b> POM (Acetal)	201 mm (8 in)	6.9 mm (0.3 in)	>20 kgf (>44.1 lbf)	21 x 51 mm (0.8 x 2.0 in)	Serial no : 10 Barcode : 9

PACKAGING

Carton	Quantity	Dimensions (mm)	Gross Weight (kg)	Volume (m³)	Standard Pastel Colours
Inner	1000	338 x 255 x 190 (13.3 x 10.0 x 7.5 in)	4.98 (11 lb)	0.016 (0.6 cu.ft.)	Body : WH PSYL PSOR PSRD PSBL PSGN BK Cap : WH FR

For colour customisations, kindly contact us for further information.

Updated Date : 06 May 2024