

## INDICATIVE SEAL

# MEGA POST SEAL (MPT)

### Pull-Tight Seal

***Ruler-like designed locking strap for industry security needs.***

The Mega Post Seal is a plastic indicative seal with a brief measurement ruler embedded at the back of the seal. With its longer default length, the seal is suitable to secure assets in any kind of carrier. Besides, the embedded ruler can be utilized as a tool for security measurement. These seals include the BioSphere bio-additive.

To provide eco-conscious solutions on a wide array of applications, all Mega Fortris' security seal product lines with plastic content will include the BioSphere bio-additive from 13th May 2024.

#### Applications:

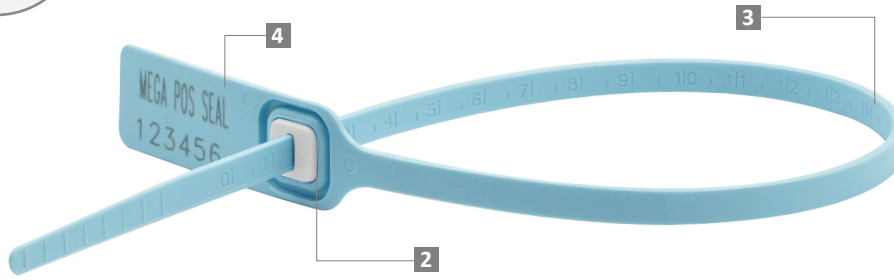
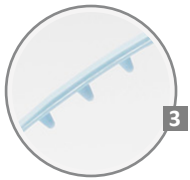
- Retail Applications
- Postal Services
- Logistics
- Banking



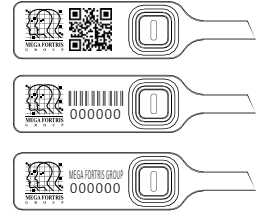
Our biodegradable plastic additives go deeper, allowing microbes to consume the C-C bonds within plastic's structure at a macromolecular level. This increases the surface area of plastic products and enables plastophilic microbes to attach to the polymer's newfound cavities. So, unlike regular plastic that can sit in a landfill for hundreds or thousands of years, plastic enhanced with BioSphere attracts over 600 different types of microbes that effectively digest and consume it.

PREVENTION · PROTECTION · PEACE OF MIND





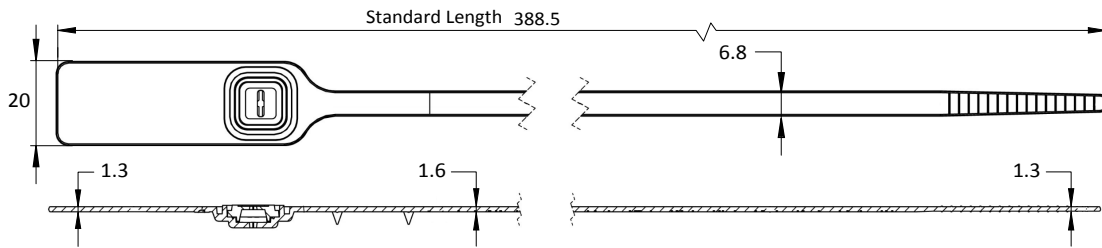
LASER MARKING OPTION



VIEW APPLICATION GIF



- 1 The Mega Post Seal is moulded with Polypropylene (PP) material with metal lock ultrasonic and heat staking encapsulated to complement the long thick strap.
- 2 One-way locking mechanism is embedded for fast and easy application.
- 3 The strap is designed with a brief ruler at the back for measuring and tamper-evident indication.
- 4 Spikes are placed behind the seal to provide better gripping on the application surface.
- 5 Irreversible identifiers such as name, logo, barcode, serial number and QR code are laser-marked on the flap.
- 6 These seals include the BioSphere bio-additive.



TECHNICAL SPECIFICATIONS

PRODUCT - MEGA POST SEAL (MPT)

Code	Material	Locking Length	Locking Size	Tensile Strength	Marking Area	Max Marking Digits
MPT	<b>Plastic :</b> Polypropylene (PP) Temperature Range: -5°C to 80°C <b>Metal Jaw :</b> Stainless Steel (SUS 304)	300 mm (12 in)	6.8 mm (0.3 in)	>25 kgf (>55.1 lbf)	20 x 40 mm (0.8 x 1.6 in)	Serial no : 15 Barcode : 13

PACKAGING

Carton	Quantity	Dimensions (mm)	Gross Weight (kg)	Volume (m³)	Standard Pastel Colours
Inner	1000	465 x 260 x 190 (18.3 x 10.6 x 6.7 in)	11.3 (24.9 lb)	0.023 (0.8 cu.ft.)	Body : WH PSYL PSOR PSRD PSBL PSGN BK

Cap : WH FR

For colour customisations, kindly contact us for further information.

Updated Date :10 May 2024