



MEGA FORTRIS
G R O U P

SECURITY SEAL

MINI CABLE LOCK 250 (MCL 250) & MEGA CABLE LOCK 250 2B (MCL 250 2B)

Pull-Tight Barrier Seal

Sleek and simple locking mechanism for absolute security.

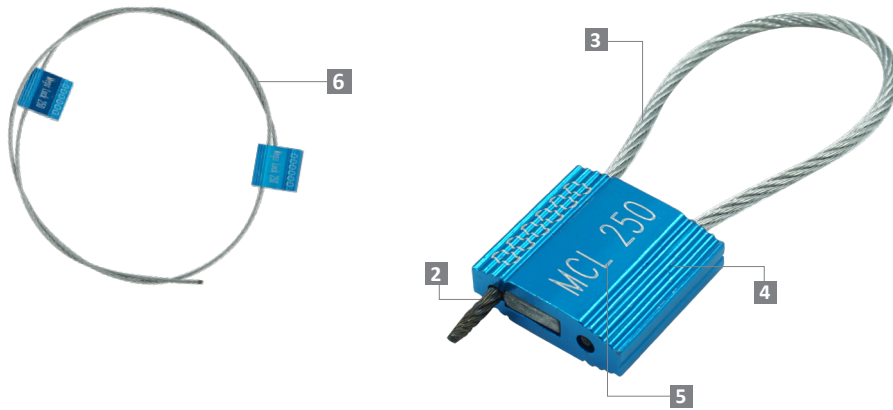
Mini Cable Lock 250 and Mega Cable Lock 250 2B are fully steel-made high-security cable seal designed to secure high-value assets. The Mega Cable Lock 250 2B version includes two locking bodies for a single length of wire. This version is designed for longer cable lengths and provides greater strength and security.

Applications:

- Valve Sealing
- Retail Applications
- Logistics
- Banking

PREVENTION · PROTECTION · PEACE OF MIND



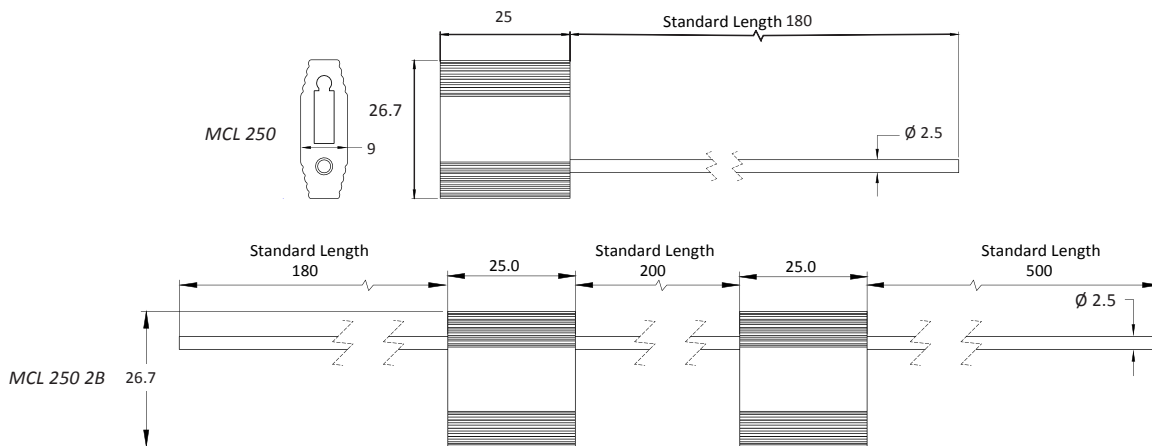


- 1** The Mini Cable Lock 250 consists of an aluminium body and steel wire that is pulled to tightly secure assets and provide clear tell-tale signs of tampering.
- 2** Mega Cable Lock 250 2B features two locking bodies and extra length steel wire for additional security and locking adaptability.
- 3** One-way locking mechanism is embedded for fast and easy application.
- 4** The non-preformed galvanised steel wire unravels upon cutting, hence showing clear evidence of tampering.
- 5** The rib exterior of the aluminium body is designed to protect the laser markings during rough handling with anodisation of solid colour for colour coding.
- 6** Irreversible identifiers such as name, logo, barcode, serial number and QR code are laser-marked on the aluminium body.

LASER MARKING OPTION



VIEW APPLICATION GIF



TECHNICAL SPECIFICATIONS

*Customisable cable length upon request.

PRODUCT - MEDIUM CABLE LOCK 250 (MCL 250) & MEGA CABLE LOCK 250 2B (MCL 250 2B)

Code	Material	Cable Length	Cable Diameter	Tensile Strength	Marking Area	Max Marking Digits
MCL 250	Body : Aluminium Cable : Galvanised Steel Wire	180 mm (7.1 in)	Ø 2.5 mm (0.1 in)	≥350 kgf (≥771.6 lbf)	0.9 x 21 mm (0.03 x 0.8 in)	Serial no : 6 Barcode : 7
MCL 250 2B		880 mm (34.6 in)				

PACKAGING

Carton	Quantity	Dimensions (mm)	Gross Weight (kg)	Volume (m ³)	Standard Colours
MCL 250 Inner	600	450 x 250 x 135 (17.7 x 9.8 x 5.3 in)	12.5 (27.6 lb)	0.015 (0.5 cu.ft.)	Body : G R B BK GD SC
MCL 250 2B Inner	60	300 x 270 x 160 (11.8 x 10.6 x 6.3 in)	7.0 (15.4 lb)	0.013 (0.5 cu.ft.)	

Carton size and weight vary according to cable length. Figures shown in the table are for the standard cable length packaging. Please contact us for additional details.

Updated Date : 06 May 2024