

**MEGA FORTRIS**  
G R O U P

## INDICATIVE SEAL

# MINI CABLE LOCK PREMIUM 150 (MCLP 150)

Pull-Tight Barrier Seal

*Delicate premium seal for security requirements.*

Mini Cable Lock Premium 150 is delicately designed with various tamper-evident features in a small-sized seal. The seal is durable and versatile for indicative security application. Its space saving size makes it ideal for identification and authentication purposes. These seals include the BioSphere bio-additive.

To provide eco-conscious solutions on a wide array of applications, all Mega Fortris' security seal product lines with plastic content will include the BioSphere bio-additive from 13th May 2024.

### Applications:

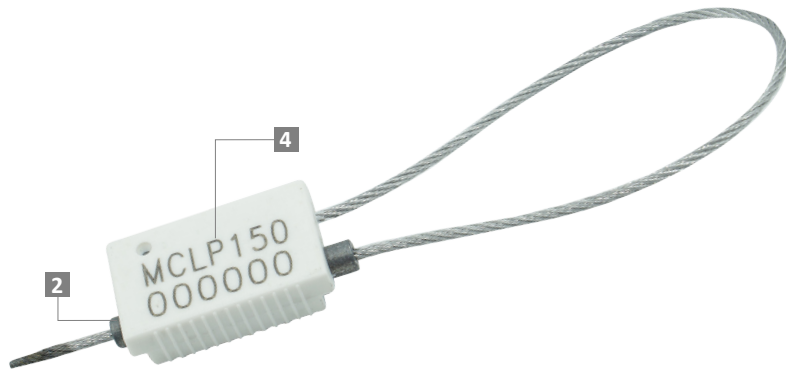
- Authentication Tagging
- Evidence Securing
- Retail Applications
- F&B Applications



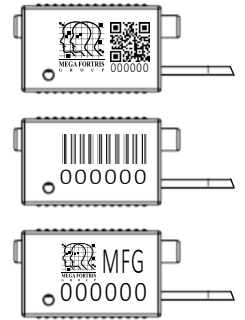
Our biodegradable plastic additives go deeper, allowing microbes to consume the C-C bonds within plastic's structure at a macromolecular level. This increases the surface area of plastic products and enables plastophilic microbes to attach to the polymer's newfound cavities. So, unlike regular plastic that can sit in a landfill for hundreds or thousands of years, plastic enhanced with BioSphere attracts over 600 different types of microbes that effectively digest and consume it.

PREVENTION · PROTECTION · PEACE OF MIND





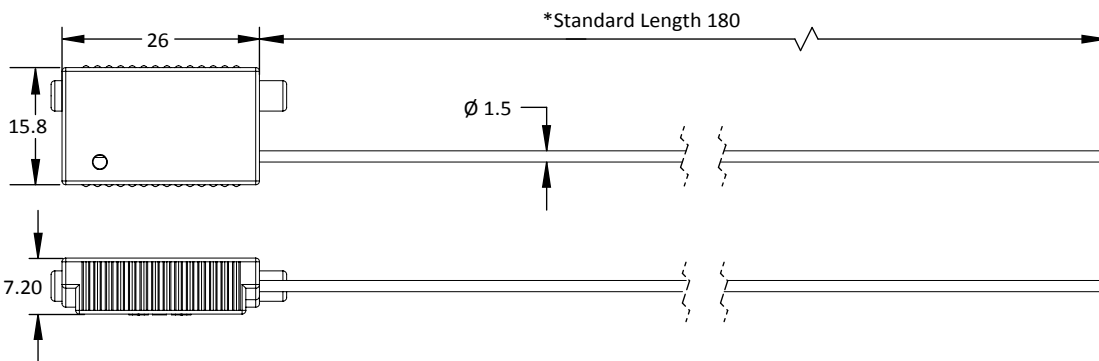
LASER MARKING OPTION



VIEW APPLICATION GIF



- 1 The Mini Cable Lock Premium 150 is moulded with high-impact PP material with non-preformed galvanised steel wire to show clear evidence of tampering.
- 2 One-way locking mechanism is embedded for fast and easy application. The additional tips at both ends provide greater protection.
- 3 Irreversible identifiers such as name, logo, barcode, serial number and QR code are laser-marked on the body.
- 4 Biodegradable additives for plastic material are available.
- 5 Plastic body material can withstand extreme weather conditions of -20°C to 80°C.
- 6 These seals include the BioSphere bio-additive.



TECHNICAL SPECIFICATIONS

\*Customisable cable length upon request.

PRODUCT - MINI CABLE LOCK PREMIUM 150 (MCLP 150)

Code	Material	Locking Length	Locking Size	Tensile Strength	Marking Area	Max Marking Digits
MCLP 150	<b>Body :</b> Zinc <b>Plastic :</b> Polypropylene (PP) <b>Locking Component :</b> Hardened Steel <b>Cable :</b> Galvanised Steel Wire	180 mm (7.1 mm)	Ø 1.5 mm (0.06 in)	<200 kgf (<440.9 lbf)	12 x 22 mm (0.5 x 0.9 in)	<b>Serial no :</b> 8 <b>Barcode :</b> 7

PACKAGING

Carton	Quantity	Dimensions (mm)	Gross Weight (kg)	Volume (m <sup>3</sup> )	Standard Pastel Colours
Inner	500	300 x 280 x 120 (11.8 x 11 x 4.7 in)	5.35 (11.8 lb)	0.01 (0.3 cu.ft.)	Body : WH PSYL PSOR PSRD PSBL PSGN BK

For colour customisations, kindly contact us for further information.

Carton size and weight vary according to cable length. Figures shown in the table are for the standard cable length packaging. Please contact us for additional details.

Updated Date : 06 May 2024