

INDICATIVE SEAL

POL LPG (POL LPG TO)

Application Seal

Rigid structure and precise locking for operation efficiency.

POL LPG is a special indicative seal precisely structured to fit its application of LPG gas valve sealing. The seal is durable to withstand extreme weather conditions with a ribbed locking strap for better gripping and clear evidence of tampering. With a full body made of plastic material, full decomposition is achievable.

These seals include the BioSphere bio-additive.

To provide eco-conscious solutions on a wide array of applications, all Mega Fortris' security seal product lines with plastic content will include the BioSphere bio-additive from 13th May 2024.

Applications:

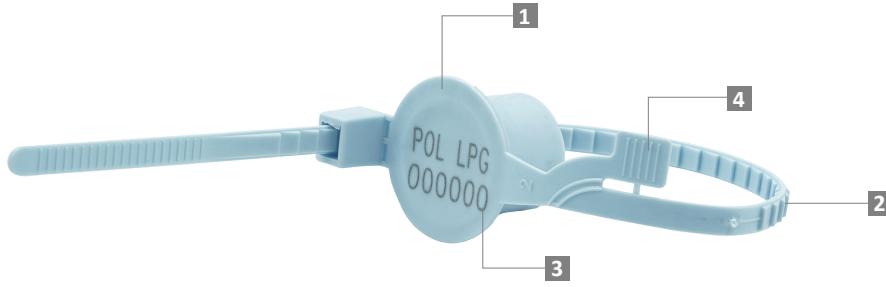
- Oil & Gas
- Chemical and Pharmaceutical
- Food Processing
- Engineering



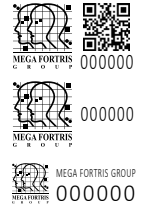
Our biodegradable plastic additives go deeper, allowing microbes to consume the C-C bonds within plastic's structure at a macromolecular level. This increases the surface area of plastic products and enables plastophilic microbes to attach to the polymer's newfound cavities. So, unlike regular plastic that can sit in a landfill for hundreds or thousands of years, plastic enhanced with BioSphere attracts over 600 different types of microbes that effectively digest and consume it.

PREVENTION · PROTECTION · PEACE OF MIND

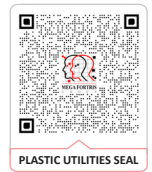




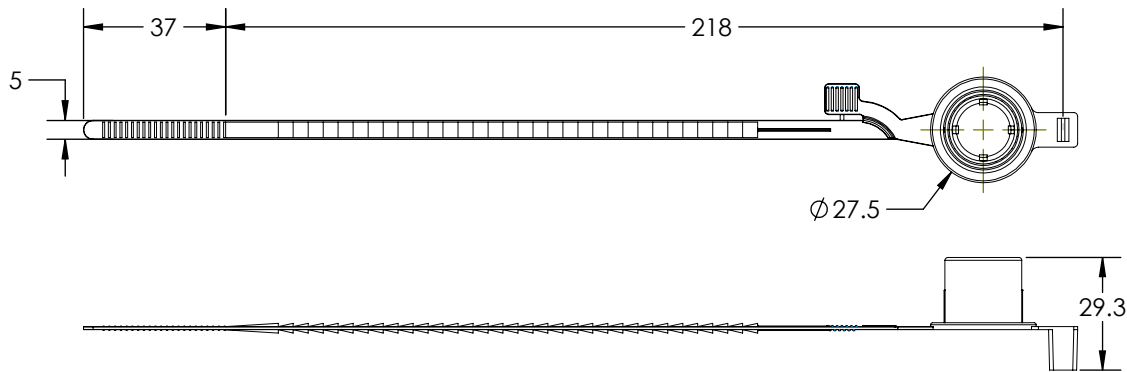
LASER MARKING OPTION



VIEW APPLICATION GIF



- 1 The POL LPG features a sealing cap and ribbed locking strap moulded with high-impact PP material that can withstand extreme weather conditions of -20°C to 80°C.
- 2 The ribbed locking strap on the seal provides better grip and stronger endurance during application. Tamper evidence signs are obvious on the strap.
- 3 Irreversible identifiers such as name, logo, barcode, serial number and QR code are laser-marked on the cap.
- 4 Default tear-off features allow quick removal.
- 5 These seals include the BioSphere bio-additive.



TECHNICAL SPECIFICATIONS

PRODUCT - POL LPG (POL LPG YL TO)

Code	Material	Locking Length	Locking Size	Tensile Strength	Marking Area	Max Marking Digits
POL LPG TO	Plastic: High-impact Polypropylene (PP)	218 mm (8.58 in)	5 mm (0.197 in)	>12 kgf (>26.5 lbf)	∅ 20 mm (0.8 in)	Serial no: 6 QR Code

PACKAGING

Carton	Quantity	Dimensions (mm)	Gross Weight (kg)	Volume (m ³)	Standard Pastel Colours
Inner	1000	562 x 316 x 244 (22.1 x 12.4 x 9.6 in)	5.23 (11.5 lb)	0.043 (1.519 cu. ft.)	Body : WH PSYL PSOR PSRD PSBL PSGN BK

For colour customisations, kindly contact us for further information.

Updated Date : 13 May 2024