

INDICATIVE SEAL

SP CASH BAG SEAL (SPCBS)

Pull-Tight Seal

Bold and diversified design for durability and versatility.

SP Cash Bag Seal is fundamentally designed with a rigid structure. The seal features an extensive range of variations to provide security option for any application. With the signature one-way locking mechanism, it is user-friendly to seal and remove. These seals include the BioSphere bio-additive.

To provide eco-conscious solutions on a wide array of applications, all Mega Fortris' security seal product lines with plastic content will include the BioSphere bio-additive from 13th May 2024.

Applications:

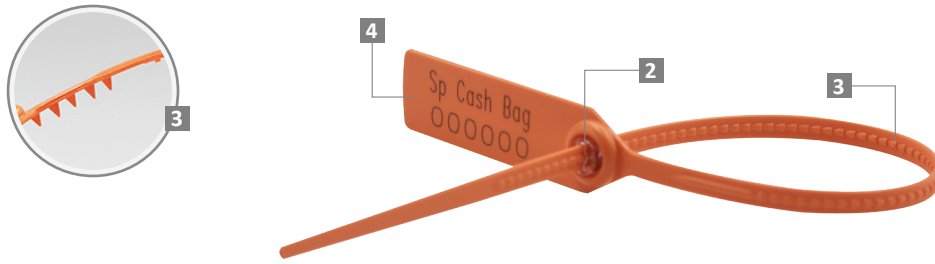
- Cash-in-transit
- Pharmaceutical
- Petro-chemical
- Retail Applications
- Postal Services
- Logistics
- Banking



Our biodegradable plastic additives go deeper, allowing microbes to consume the C-C bonds within plastic's structure at a macromolecular level. This increases the surface area of plastic products and enables plastophilic microbes to attach to the polymer's newfound cavities. So, unlike regular plastic that can sit in a landfill for hundreds or thousands of years, plastic enhanced with BioSphere attracts over 600 different types of microbes that effectively digest and consume it.

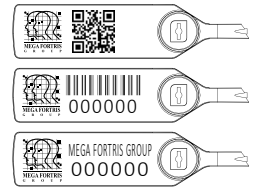
PREVENTION · PROTECTION · PEACE OF MIND



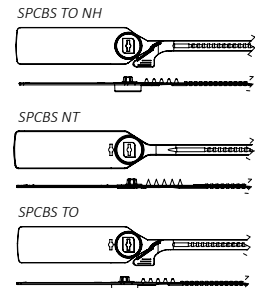
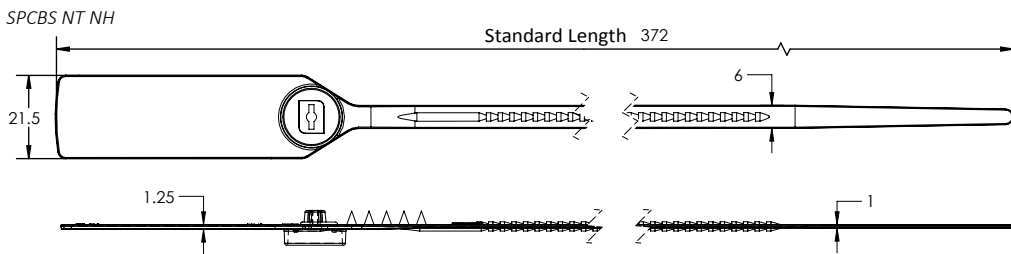


- 1 The SP Cash Bag Seal is moulded with Polypropylene (PP) or high-impact Nylon (NY) material with the metal lock heat staking encapsulated to complement the long thick strap.
- 2 The locking ribs on both sides of the locking strap provide greater locking security, while the on the back of the seal provide better grip and stronger endurance during application. Evidence of tampering is obvious on the strap.
- 3 Tear-off feature allows quick removal of the seal.
- 4 The larger flap allows ample space for irreversible laser marking of identifiers such as name, logo, barcode, serial number and QR code.
- 5 An optional hole (H) across all SPCBS is available for the neat appearance after sealing.
- 6 These seals include the BioSphere bio-additive.

LASER MARKING OPTION



VIEW APPLICATION GIF



TECHNICAL SPECIFICATIONS

PRODUCT - SP CASH BAG (SPCBS)

Code	Material	Locking Length	Locking Size	Tensile Strength	Marking Area	Max Marking Digits
SPCBS NT NH	Plastic : Polypropylene (PP) Temperature Range: -5°C to 80°C	250 mm (10 in)	6.0 mm (0.2 in)	PP: ≥25 kgf (≥55.1 lbf)	18 x 50 mm (0.7 x 2.0 in)	Serial no : 10 Barcode : 11
SPCBS TO NH						
SPCBS NT	High-impact Nylon (NY) Temperature Range: -20°C to 80°C			NY: ≥28 kgf (≥61.7 lbf)		
SPCBS TO	Metal Jaw : Stainless Steel (SUS 304)					

PACKAGING

Carton	Quantity	Dimensions (mm)	Gross Weight (kg)	Volume (m ³)	Standard Pastel / Solid Colours
Inner	1000	465 x 260 x 190 (18.3 x 10.2 x 7.5 in)	4.8 (10.6 lb)	0.023 (0.8 cu.ft.)	Polypropylene : Body : WH PSYL PSOR PSRD PSBL PSGN BK Cap : WH FR

Nylon :

Body : WH B YL G RD BK

Cap : WH FR

For colour customisations, kindly contact us for further information.

Updated Date : 10 May 2024