

STORAGE SECURITY

SECURITY TOTE BOX (TOTE BOX)

Tamper-Evident Storage

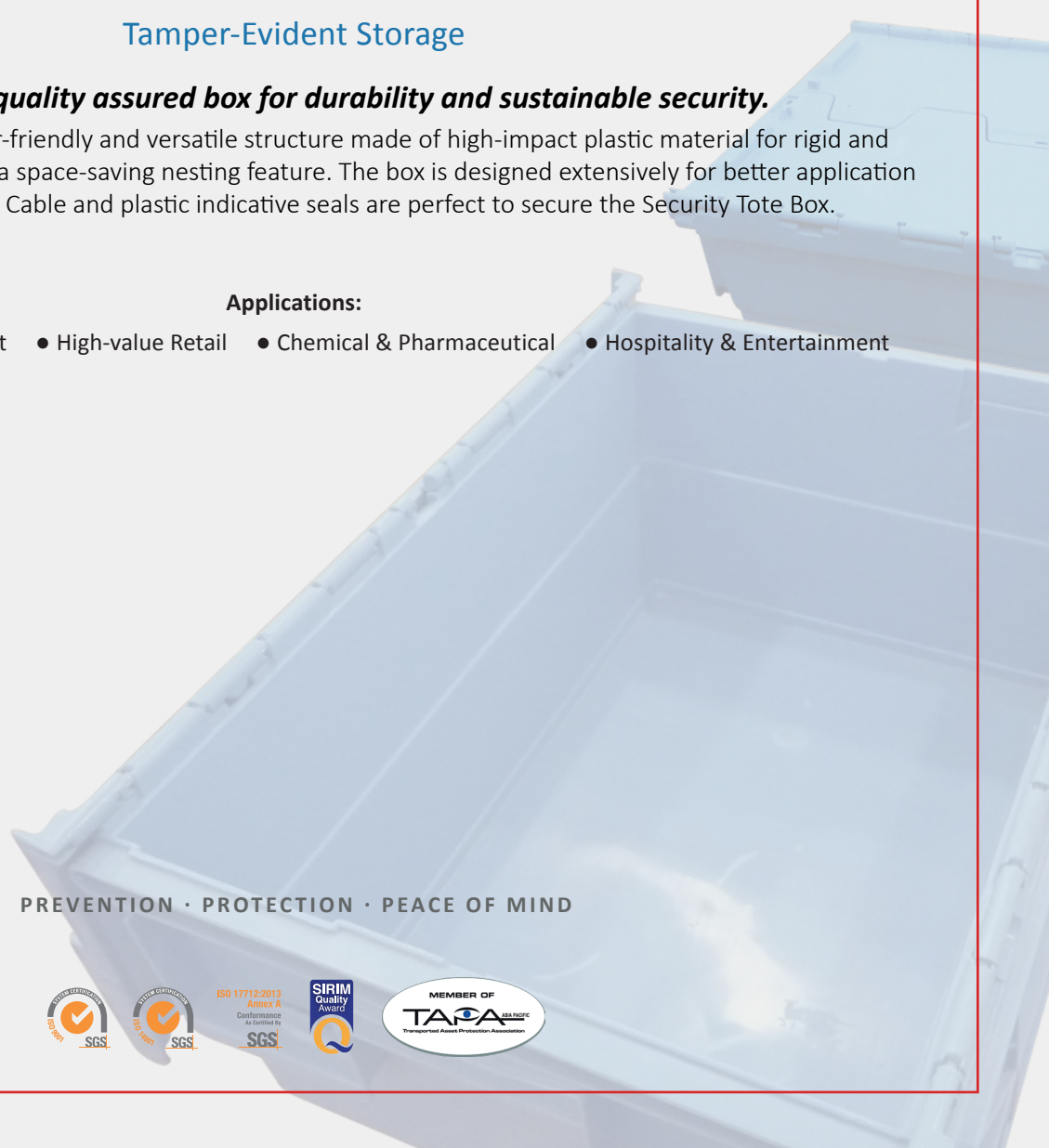
Feasible and quality assured box for durability and sustainable security.

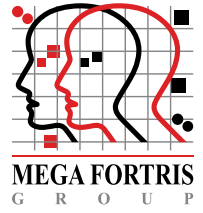
Security Tote Box has a user-friendly and versatile structure made of high-impact plastic material for rigid and durable properties, as well as a space-saving nesting feature. The box is designed extensively for better application and security purposes. Cable and plastic indicative seals are perfect to secure the Security Tote Box.

Applications:

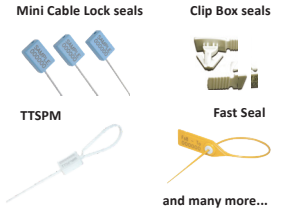
- Defense & Law Enforcement
- High-value Retail
- Chemical & Pharmaceutical
- Hospitality & Entertainment

PREVENTION · PROTECTION · PEACE OF MIND





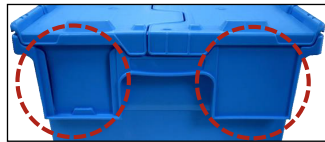
RECOMMENDED PAIRING SEALS



and many more...

Handle & Label Holder

Two label holder places on short sides of the box. Left label holder place can be inserted label or card. Right label holder has a textured surface for adhesive label.

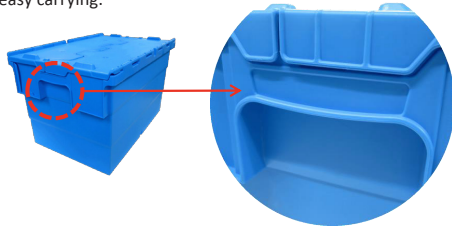


Anti-slip design

Protruding stands on lids makes stacking more stable and safe when fully loaded and moving.



Stylish handle design provide comfortable to hold and easy carrying.



Banding Straps

Special design for banding straps at top and bottom of box.



Seal Application

Dual locking latches for extra security.



- 1 Security Tote Box is moulded with high-impact plastic materials durability and to withstand rough handling for an average of 5 years usage.
- 2 The lid is designed with a special closing mechanism to provide complete sealing with security seals applicable for extra security.
- 3 Banding strap and anti-slip structure on the lids stabilize the in-transit boxes.
- 4 Label holders on the side offer spaces for card and label, and also a textured area for adhesive label.
- 5 Irreversible identifiers such as name, logo, barcode, serial number and QR code can be laser marked on the box lids and sides, otherwise on the recommended pairing seals.

VIEW APPLICATION GIF



SECURITY BOXES

TECHNICAL SPECIFICATIONS

PRODUCT - SECURITY TOTE BOX

Code	Material	External Dimensions	Internal Dimensions	Height	Weight	Capacity
Security Tote Box	Plastic: High-impact Food Grade Polypropylene (PP)	600 x 400 x 365 (23.6 x 15.7 x 14.4 in)	550 x 365 x 345 (21.7 x 14.4 x 13.6 in)	Nesting: 123 mm (4.8 in) Stacking: 355 mm (14 in)	3.1 kg (6.8 lb)	65 litre

PACKAGING

Carton	Quantity	Dimensions (mm)	Gross Weight (kg)	Volume (m ³)	Standard Colour
Inner		TBC			Body : BL *Colour customization upon request

Updated Date : 21 May 2024

© 2024 Mega Fortris. All rights reserved. Reproduction in whole or in part without written permission is prohibited. Products and names of products described here are trade names of the Mega Fortris Group of Companies. Features and specifications are subject to change without notice as Mega Fortris products undergo constant development. Mega Fortris Berhad reserves the right to make changes without notice to our products and the information published about them. The material presented in the "Product Application GIF" image is for guidance only.